

6 MAY 2021

Compelling copper-gold porphyry drilling target defined at El Palmar project, Ecuador

Rig has been contracted; Drilling to start this quarter

Key Points

- **A ground magnetic survey at El Palmar has identified an outstanding drill target with a classic porphyry signature**
- **Relogging and study of historical drill holes, located on the margin of the newly-defined target, has identified the presence of chalcopyrite and bornite in typical porphyry alteration assemblages**
- **A drill rig has been contracted and a 2,000m drilling program is expected to start this quarter**

Sunstone Metals Ltd (ASX: STM) is pleased to announce that it has identified a compelling copper-gold porphyry target at its El Palmar project in northern Ecuador (Figure 1).

The target is based on the outstanding results of a ground magnetic survey and is supported by a review of historical holes which contained chalcopyrite and bornite within typical porphyry alteration assemblages, and were drilled on the edge of the target area.

In light of these strong results, Sunstone has contracted a drilling rig and expects to start drilling this quarter.

El Palmar is located in northern Ecuador in the vicinity of the 1.0Bt Llorimagua copper-molybdenum porphyry deposit, and in the same regional structural belt that hosts the 2.6Bt Alpala copper-gold deposit within the Cascabel project (Figure 5), (see ASX announcement dated 12 August 2020).

Processing of recently collected ground magnetic data has defined a large anomaly with a diameter of ~700m exhibiting features consistent with a large porphyry system (Figures 2, 3, and 4).

Importantly, the historical drilling completed by Codelco in 2012 took place at high levels on the margins and away from the newly defined magnetic anomaly, and into country rock (Figures 2, 3, and 4).

The results of that historical drilling confirmed the presence of a gold and copper porphyry system. Recent detailed analysis of that drill core by Sunstone has confirmed local chalcopyrite and bornite within typical porphyry alteration assemblages, with mineralisation starting from surface.

Sunstone will undertake a Phase 1, 2,000m drilling program. Drill preparations are well advanced. Initial drilling will target the upper 400m of the system, but drill holes may be extended if mineralisation and alteration continue to depth, towards the modelled deeper roots of the system (Figure 4).

The first drill hole is planned to test the magnetic anomaly west of known mineralisation from historical drilling and to drill under the highest grade gold in surface rock chips, where values up to 2.24g/t gold and 0.3% copper have been recorded.

ASX ANNOUNCEMENT

In parallel with drilling preparations, a soil sampling program is underway using handheld augur drills to drill through the thin veneer of younger cover (up to 8m thick) to sample the underlying weathered bedrock. This program will cover the entire magnetic anomaly and is expected to take 8 weeks to complete.

Sunstone Managing Director Malcolm Norris said: “This is an extremely exciting result. The modelled magnetics define a ‘classic’ porphyry signature of at least 700m diameter and the historical drilling just clipped the edge of this anomaly and drilled away from it. We know we have a mineralised porphyry system here so this next phase of drilling will be aimed at discovery. We will know what we are dealing with over the next few months, but we are very optimistic about this target. It is well defined and is geologically consistent with a porphyry signature.

“It is very exciting times as we progress exploration and drilling on 2 porphyry targets in Ecuador. Our drilling at Brama continues, and we have many reasons to be optimistic regarding our planned drilling at El Palmar”.



Figure 1: Location of the El Palmar project in northern Ecuador

ASX ANNOUNCEMENT

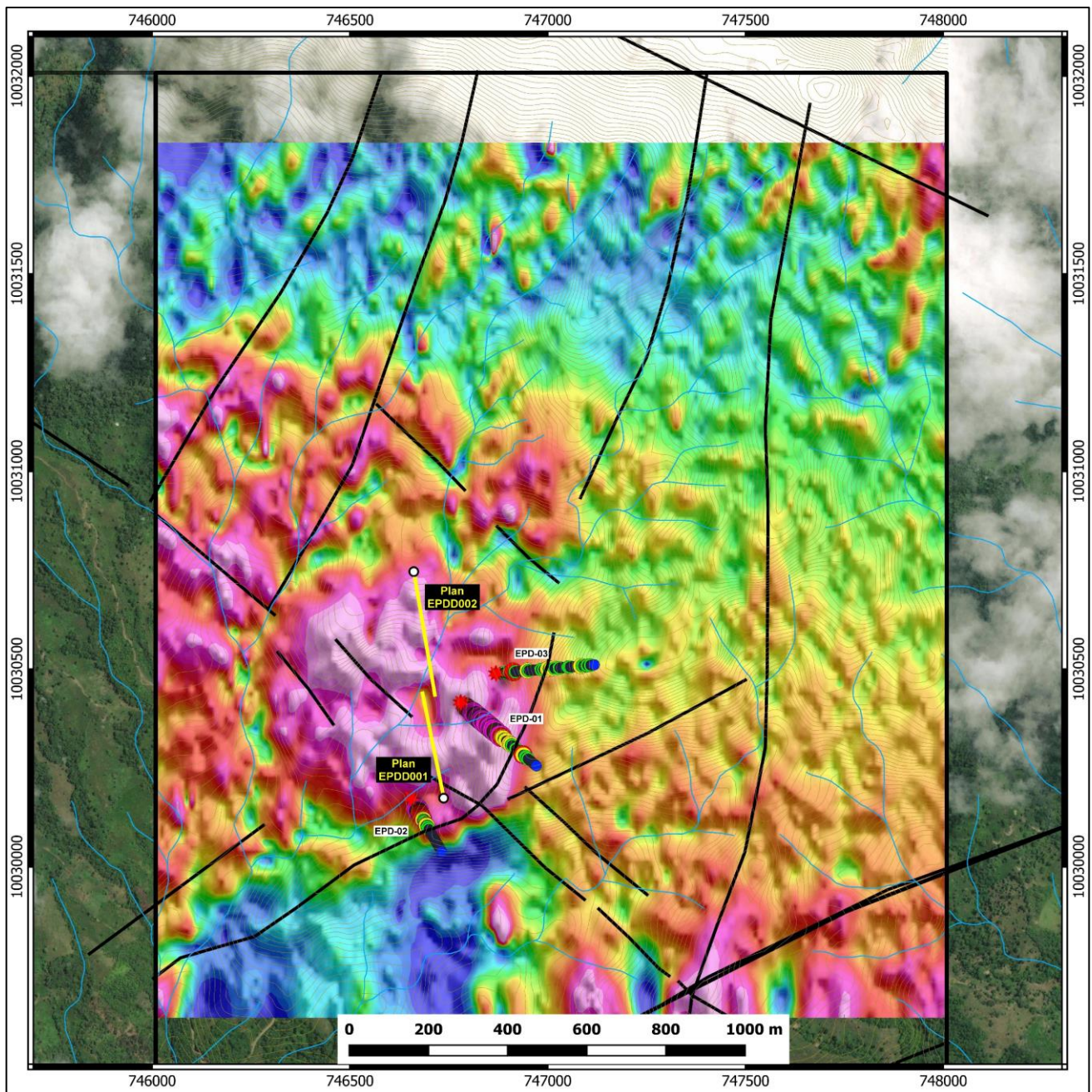


Figure 2: RTP image of the El Palmar ground magnetic data showing the large ~700m diameter anomaly (in magenta) that is consistent with the signature of a porphyry system. The first drill hole planned at El Palmar is being collared just east of the historic EPD-02 collar and will be drilled towards the NNW. Other planned drill holes are shown in yellow. Historical drill holes EPD-01 – 03 have copper assays plotted down hole – blue, green, and yellow show Cu <0.1%, red and magenta show Cu >0.1%

ASX ANNOUNCEMENT

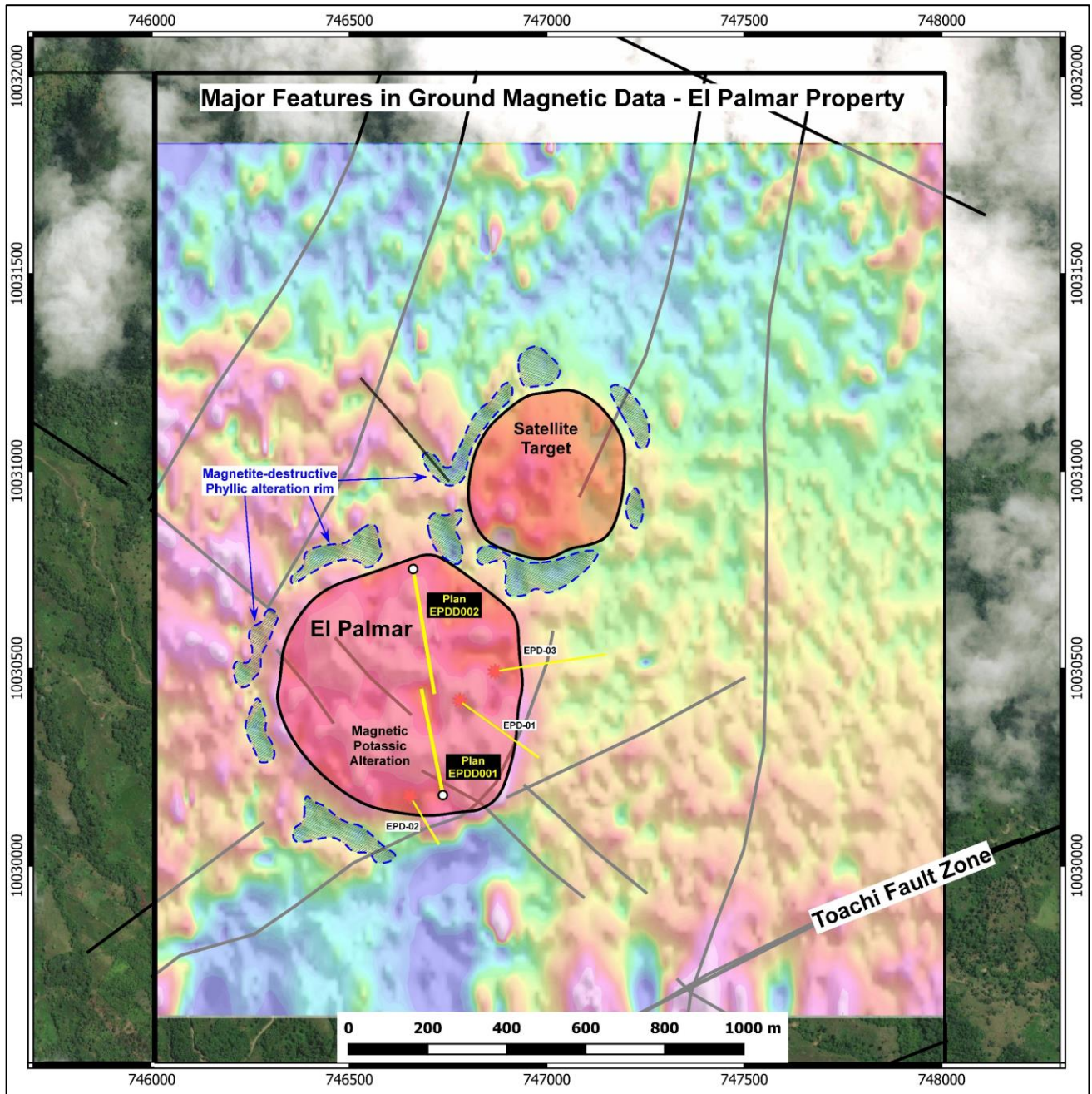


Figure 3: Interpretation of Figure 2 showing the main El Palmar target and a satellite target based on interpretation of magnetics data and supporting datasets. Also shown are the first 2 planned drill holes by Sunstone.

ASX ANNOUNCEMENT

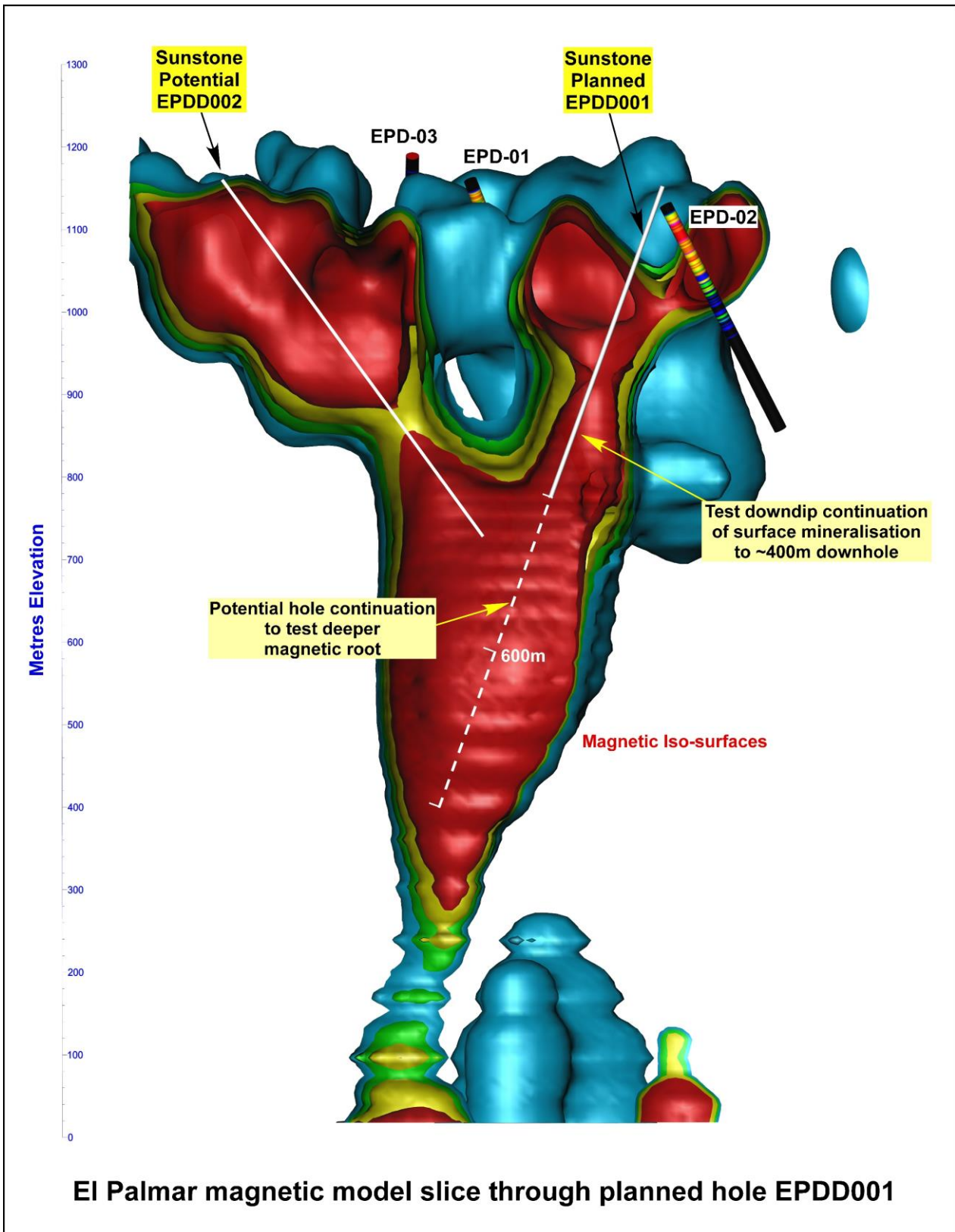


Figure 4: 3-D model of the El Palmar magnetic target sliced on the plane of the proposed drilling with holes 1 and 2. Historical hole EPD-02 shows the mineralised edge of the newly defined system and drilling away from the target. Historical drill hole EPD-02 shows copper assays plotted down hole – black, blue, green show Cu <0.1%, yellow, orange, red and magenta show Cu >0.1%.

ASX ANNOUNCEMENT

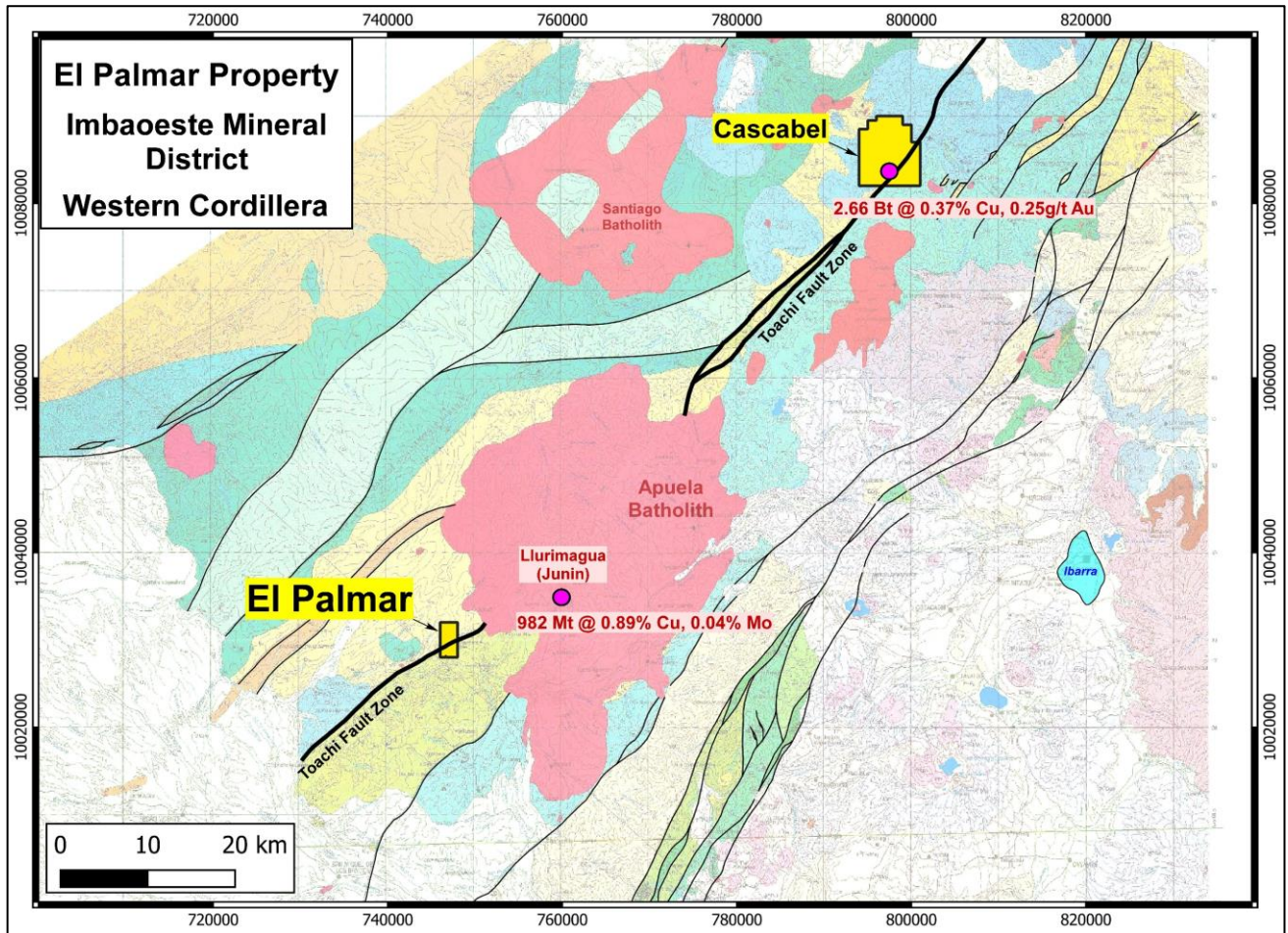


Figure 5: Location of the El Palmar project relative to the Lurimagua and Cascabel Alpala deposits, and the Toachi fault system.

ASX ANNOUNCEMENT

About Sunstone Metals

Sunstone has an advanced portfolio of exploration and development projects in Ecuador and Scandinavia. The portfolio comprises:

1. **The Bramaderos Gold-Copper Project** where Sunstone owns an 87.5% interest with TSXV listed Cornerstone Capital Resources holding 12.5% (see ASX announcement dated 10th April 2017, 28th August 2019, and 7 January 2020). The Bramaderos gold-copper project is located in Loja province, southern Ecuador, and is highly prospective for the discovery of large porphyry gold-copper systems, and high-grade epithermal gold systems. Historical exploration results from drilling at Bramaderos together with recent exploration by Sunstone and joint venture partner Cornerstone Capital Resources (TSXV:CGP) indicate multiple fertile mineralised systems with significant discovery potential.
2. **The El Palmar Copper-Gold Project** where the highly prospective 800ha El Palmar copper-gold porphyry project in Ecuador will be acquired through a Staged Acquisition Agreement, which will ultimately deliver 100 per cent ownership to Sunstone.
3. **Sunstone has a significant equity interest** in Stockholm listed Copperstone Resources (COPP-B.ST) following the sale of the Viscaria Copper project to Copperstone in 2019.
4. **The Finland Lithium Project** includes the Kietyönmäki lithium prospect. Drilling by Sunstone has delivered 24.2m at 1.4% Li₂O in a spodumene-bearing pegmatite.

Competent Persons Statement

The information in this report that relates to exploration results is based upon information reviewed by Dr Bruce Rohrlach who is a Member of the Australasian Institute of Mining and Metallurgy. Dr Rohrlach is a full-time employee of Sunstone Metals Ltd and has sufficient experience which is relevant to the style of mineralisation and type of deposit under consideration and to the activity which he is undertaking to qualify as a Competent Person as defined in the 2012 Edition of the "Australasian Code for Reporting of Exploration Results, Mineral Resources and Ore Reserves". Dr Rohrlach consents to the inclusion in the report of the matters based on his information in the form and context in which it appears.

Mr Malcolm Norris, Managing Director of Sunstone Metals Ltd., has authorised this announcement to be lodged with the ASX.

For further information, please visit www.sunstonemetals.com.au

Mr Malcolm Norris
Managing Director
Sunstone Metals Ltd
Tel: 07 3368 9888

Email: mnorris@sunstonemetals.com.au

ASX ANNOUNCEMENT

TABLE 1 – Section 1: Sampling Techniques and Data

Criteria	JORC Code explanation	Commentary
Sampling techniques	<ul style="list-style-type: none"> Nature and quality of sampling (e.g. cut channels, random chips, or specific specialised industry standard measurement tools appropriate to the minerals under investigation, such as downhole gamma sondes, or handheld XRF instruments, etc.). These examples should not be taken as limiting the broad meaning of sampling. 	<ul style="list-style-type: none"> The historical results announced here are from rock chip samples and drill core from El Palmar. The drill core sampling was carried out using half core, generally at 1.5 to 2m intervals. New results are based on visual observation of drill core.
	<ul style="list-style-type: none"> Include reference to measures taken to ensure sample representivity and the appropriate calibration of any measurement tools or systems used. 	<ul style="list-style-type: none"> Historical rock samples were taken randomly with focus on those exhibiting alteration and mineralisation. Trench samples from within a hand dug trench and hand cut channel samples were continuously sampled for representivity. Core recovery was good, and core aligned prior to splitting.
	<ul style="list-style-type: none"> Aspects of the determination of mineralisation that are Material to the Public Report. In cases where 'industry standard' work has been done this would be relatively simple (e.g. 'reverse circulation drilling was used to obtain 1 m samples from which 3 kg was pulverised to produce a 30 g charge for fire assay'). In other cases, more explanation may be required, such as where there is coarse gold that has inherent sampling problems. Unusual commodities or mineralisation types (e.g. submarine nodules) may warrant disclosure of detailed information. 	<ul style="list-style-type: none"> Diamond drilling, rock chip and channel sampling points have been guided by geological mapping. The rock chip and drill samples from El Palmar were dried, crushed to 70% passing 2mm, Split 1000g and pulverised to 85% passing 75microns. A 20g portion of this sample was used for multi-element analysis (IMS-230) and a 30g sample for Fire Assay Au (FAS-111).
Drilling techniques	<ul style="list-style-type: none"> Drill type (eg core, reverse circulation, open-hole hammer, rotary air blast, auger, Bangka, sonic, etc) and details (e.g. core diameter, triple or standard tube, depth of diamond tails, face-sampling bit or other type, whether core is oriented and if so, by what method, etc). 	<ul style="list-style-type: none"> The El Palmar target areas were drilled by historical exploration in 2012.
Drill sample recovery	<ul style="list-style-type: none"> Method of recording and assessing core and chip sample recoveries and results assessed. 	<ul style="list-style-type: none"> Diamond core recovery data for the El Palmar historical drilling was good from visual review of drill core.
	<ul style="list-style-type: none"> Measures taken to maximise sample recovery and ensure representative nature of the samples. 	<ul style="list-style-type: none"> Historical core recovery at El Palmar was good.
	<ul style="list-style-type: none"> Whether a relationship exists between sample recovery and grade and whether sample bias may have occurred due to preferential loss/gain of fine/coarse material. 	<ul style="list-style-type: none"> No relationship between sample recovery and grade has been established.
Logging	<ul style="list-style-type: none"> Whether core and chip samples have been geologically and geotechnically logged to a level of detail to support appropriate Mineral Resource estimation, mining studies and metallurgical studies. 	<ul style="list-style-type: none"> Drill samples, trench samples and rock chips were logged for lithology, weathering, structure, mineralogy, mineralisation, colour, and other features. Recent logging and sampling for the El Palmar project were carried out according to Sunstone's internal protocols and QAQC procedures which comply with industry standards.
	<ul style="list-style-type: none"> Whether logging is qualitative or quantitative in nature. Core (or costean, channel, etc.) photography. 	<ul style="list-style-type: none"> Drill samples are logged for lithology, weathering, structure, mineralogy, mineralisation, colour, and other features.
	<ul style="list-style-type: none"> The total length and percentage of the relevant intersections logged. 	<ul style="list-style-type: none"> The historical drill holes are being re-logged in full.
Sub-sampling techniques and sample preparation	<ul style="list-style-type: none"> If core, whether cut or sawn and whether quarter, half or all core taken. 	<ul style="list-style-type: none"> Half core was used to provide the samples that were submitted for assay from the upper zones of the El Palmar historical drilling.
	<ul style="list-style-type: none"> If non-core, whether riffled, tube sampled, rotary split, etc. and whether sampled wet or dry. 	<ul style="list-style-type: none"> Standard rock chip samples and channel samples. Samples were dried in the laboratory.
	<ul style="list-style-type: none"> For all sample types, the nature, quality and appropriateness of the sample preparation technique. 	<ul style="list-style-type: none"> Historical drill core samples from El Palmar (drilled by Codelco in 2012) were analysed by ACME Labs in Vancouver. Samples were crushed and split with 250

ASX ANNOUNCEMENT

Criteria	JORC Code explanation	Commentary
		<p>grams pulverized to 200 mesh (Method - R200-250). Analysis on drill core was undertaken on a sample split (Method - VAN split pulp).</p> <ul style="list-style-type: none"> • Surface rocks at El Palmar are historical and were collected by 3 different companies. GOEX S.A. samples were analysed at Bureau Veritas Laboratories in Peru. Lowell Mineral Exploration rocks were analysed by ALS Minerals, with sample preparation involving fine crushing 70% passing 2mm (Method CRU-31), crushed sample split (Method SPL-21) and pulverise 1000g to 85% passing 75um (Method PUL-32). Codelco surface rock samples were analysed by ACME Labs in Vancouver. Samples were crushed and split with 250 grams pulverized to 200 mesh (Method - R200-250) • The sample preparation is carried out according to industry standard practices using highly appropriate sample preparation techniques.
	<ul style="list-style-type: none"> • <i>Quality control procedures adopted for all sub-sampling stages to maximise representivity of samples.</i> 	<ul style="list-style-type: none"> • Sunstone used an industry standard QAQC programme involving Certified Reference Materials “standards” and blank samples, which were introduced in the assay batches. • Standards (Certified Reference Materials) or analytical blanks were submitted at a rate of 1 in 28 samples. Field duplicates were also taken at a rate of approximately 1 in 28 samples. • The check or duplicate assay results are reported along with the sample assay values in the final analysis report.
	<ul style="list-style-type: none"> • <i>Measures taken to ensure that the sampling is representative of the in-situ material collected, including for instance results for field duplicate/second-half sampling.</i> 	<ul style="list-style-type: none"> • For diamond core, the routine sample procedure is to always take the half/quarter core to the right of the orientation line (looking down hole) or the cut line (in cases where the orientation line was not reliable). • Once assay results are received the results from duplicate samples are compared with the corresponding routine sample to ascertain whether the sampling is representative.
	<ul style="list-style-type: none"> • <i>Whether sample sizes are appropriate to the grain size of the material being sampled.</i> 	<ul style="list-style-type: none"> • Sample sizes are considered to be appropriate for the style of sampling undertaken and the grain size of the material, and correctly represent the style and type of mineralisation at the exploration stage.
<p>Quality of assay data and laboratory tests</p>	<ul style="list-style-type: none"> • <i>The nature, quality and appropriateness of the assaying and laboratory procedures used and whether the technique is considered partial or total.</i> • <i>For geophysical tools, spectrometers, handheld XRF instruments, etc., the parameters used in determining the analysis including instrument make and model, reading times, calibrations factors applied and their derivation, etc.</i> • <i>Nature of quality control procedures adopted (e.g. standards, blanks, duplicates, external laboratory checks) and whether acceptable levels of accuracy (i.e. lack of bias) and precision have been established.</i> 	<ul style="list-style-type: none"> • Sunstone uses a fire assay gold technique for Au assays (FAS-111) and a four acid multi element technique (IMS-230) for a suite of 48 elements. FAS-111 involves Au by Fire Assay on a 30-gram aliquot, fusion and atomic absorption spectroscopy (AAS) at trace levels. IMS-20 is considered a near total 4 acid technique using a 20g aliquot followed by multi-element analysis by ICP-AES/MS at ultra-trace levels. • This analysis technique is considered suitable for this style of mineralisation. • No handheld “Niton” XRF data are referenced in this announcement. • Standards, blanks and duplicates are inserted ~1/28 samples. The values of the standards range from low to high grade and are considered appropriate to monitor performance of values near cut-off and near

ASX ANNOUNCEMENT

Criteria	JORC Code explanation	Commentary																				
		<p>the mean grade of the deposit.</p> <ul style="list-style-type: none"> The check sampling results are monitored, and performance issues are communicated to the laboratory if necessary. 																				
Verification of sampling and assaying	<ul style="list-style-type: none"> The verification of significant intersections by either independent or alternative company personnel. 	<ul style="list-style-type: none"> Procedure checks have been completed by the Competent Person for exploration results for this announcement. 																				
	<ul style="list-style-type: none"> The use of twinned holes. 	<ul style="list-style-type: none"> Twin holes have not been drilled in these areas. 																				
	<ul style="list-style-type: none"> Documentation of primary data, data entry procedures, data verification, data storage (physical and electronic) protocols. 	<ul style="list-style-type: none"> Sunstone sampling data were imported and validated using Excel. 																				
	<ul style="list-style-type: none"> Discuss any adjustment to assay data. 	<ul style="list-style-type: none"> Assay data were not adjusted. Core loss intervals are assigned assay values of zero where present. 																				
Location of data points	<ul style="list-style-type: none"> Accuracy and quality of surveys used to locate drill holes (collar and down-hole surveys), trenches, mine workings and other locations used in Mineral Resource estimation. 	<ul style="list-style-type: none"> Sample co-ordinates are located by GPS and for trench samples measured along the length of the trench. 																				
	<ul style="list-style-type: none"> Specification of the grid system used. 	<ul style="list-style-type: none"> Ecuador projection parameters: <table border="1" style="width: 100%; border-collapse: collapse;"> <thead> <tr> <th style="text-align: center;">Parameter</th> <th style="text-align: center;">Value</th> </tr> </thead> <tbody> <tr> <td>Reference Ellipsoid</td> <td>International 1924</td> </tr> <tr> <td>Semi Major Axis</td> <td></td> </tr> <tr> <td>Inverse Flattening (1/f)</td> <td></td> </tr> <tr> <td>Type of Projection</td> <td>UTM Zone -17S (Datum PSAD56)</td> </tr> <tr> <td>Central Meridian:</td> <td>-81.0000</td> </tr> <tr> <td>Latitude of Origin</td> <td>0.0000</td> </tr> <tr> <td>Scale on Central Meridian</td> <td>0.9996</td> </tr> <tr> <td>False Northing</td> <td>10000000</td> </tr> <tr> <td>False Easting</td> <td>500000</td> </tr> </tbody> </table>	Parameter	Value	Reference Ellipsoid	International 1924	Semi Major Axis		Inverse Flattening (1/f)		Type of Projection	UTM Zone -17S (Datum PSAD56)	Central Meridian:	-81.0000	Latitude of Origin	0.0000	Scale on Central Meridian	0.9996	False Northing	10000000	False Easting	500000
	Parameter	Value																				
Reference Ellipsoid	International 1924																					
Semi Major Axis																						
Inverse Flattening (1/f)																						
Type of Projection	UTM Zone -17S (Datum PSAD56)																					
Central Meridian:	-81.0000																					
Latitude of Origin	0.0000																					
Scale on Central Meridian	0.9996																					
False Northing	10000000																					
False Easting	500000																					
<ul style="list-style-type: none"> Quality and adequacy of topographic control. 	<ul style="list-style-type: none"> The topographic control was compared against published maps and satellite imagery and found to be good quality. 																					
Data spacing and distribution	<ul style="list-style-type: none"> Data spacing for reporting of Exploration Results. 	<ul style="list-style-type: none"> The drill core samples reported or illustrated were collected from three diamond drill holes from the El Palmar targets, and with sample length generally ranging between 0.3-2m. 																				
	<ul style="list-style-type: none"> Whether the data spacing, and distribution is sufficient to establish the degree of geological and grade continuity appropriate for the Mineral Resource and Ore Reserve estimation procedure(s) and classifications applied. 	<ul style="list-style-type: none"> The data from these samples does not contribute to any resource estimate nor implies any grade continuity. 																				
	<ul style="list-style-type: none"> Whether sample compositing has been applied. 	<ul style="list-style-type: none"> No sample compositing was done. 																				
Orientation of data in relation to geological structure	<ul style="list-style-type: none"> Whether the orientation of sampling achieves unbiased sampling of possible structures and the extent to which this is known, considering the deposit type. 	<ul style="list-style-type: none"> Drilling orientations were appropriate for the interpreted geology providing representative samples. Trench orientations and rock chip locations were appropriate for the interpreted geology providing representative samples. 																				
	<ul style="list-style-type: none"> If the relationship between the drilling orientation and the orientation of key mineralised structures is considered to have introduced a sampling bias, this should be assessed and reported if material. 	<ul style="list-style-type: none"> No sampling bias is expected at this stage. 																				

ASX ANNOUNCEMENT

Criteria	JORC Code explanation	Commentary
Sample security	<ul style="list-style-type: none"> <i>The measures taken to ensure sample security.</i> 	<ul style="list-style-type: none"> Sunstone sampling procedures indicate individual samples were given due attention. Sample security was managed through sealed individual samples and sealed bags of multiple samples for secure delivery to the laboratory by permanent staff of the joint venture. MS Analytical is an internationally accredited laboratory that has all its internal procedures heavily scrutinised in order to maintain their accreditation. MS Analytical is accredited to ISO/IEC 17025 2005 Accredited Methods.
Audits or reviews	<ul style="list-style-type: none"> <i>The results of any audits or reviews of sampling techniques and data.</i> 	<ul style="list-style-type: none"> Sunstone's sampling techniques and data have been audited multiple times by independent mining consultants during various project assessments. These audits have concluded that the sampling techniques and data management are to industry standards. All historical data has been validated to the best degree possible and migrated into a database.

TABLE 1 – Section 2: Exploration Results

Criteria	JORC Code explanation	Commentary
Mineral tenement and land tenure status	<ul style="list-style-type: none"> <i>Type, reference name/number, location and ownership including agreements or material issues with third parties such as joint ventures, partnerships, overriding royalties, native title interests, historical sites, wilderness or national park and environmental settings.</i> 	<ul style="list-style-type: none"> The El Palmar property is located in Imbabura province and is held by an Ecuadorian registered company 'GOEX'. Due diligence to date show that there are no wilderness areas or national parks or areas of environmental significance within or adjoining the concession area. There are no native title interests. Sunstone and GOEX have entered into a Staged Acquisition Agreement where Sunstone may earn up to 100% based on defined milestones.
	<ul style="list-style-type: none"> <i>The security of the tenure held at the time of reporting along with any known impediments to obtaining a licence to operate in the area.</i> 	<ul style="list-style-type: none"> The El Palmar exploration concession was granted in 2003 and held 100% by GOEX.
Exploration done by other parties	<ul style="list-style-type: none"> <i>Acknowledgment and appraisal of exploration by other parties.</i> 	<ul style="list-style-type: none"> The historic exploration at El Palmar was completed by various groups over the period 1990's, 2007-2008, 2011-2012 and GOEX (2012 to 2020). Most of the readily available historic data has been acquired and compiled into databases and a GIS project. Exploration by other parties has included stream sediment surveys, geological mapping, rock chip sampling, some local soil sampling, channel sampling and limited diamond drilling (3 holes).
Geology	<ul style="list-style-type: none"> <i>Deposit type, geological setting and style of mineralisation.</i> 	<ul style="list-style-type: none"> The deposit style being explored for includes intrusion-related and stockwork hosted porphyry Au-Cu systems plus epithermal gold-silver-polymetallic veins. The setting at El Palmar is a volcanic arc setting of Miocene age intrusions.

ASX ANNOUNCEMENT

Criteria	JORC Code explanation	Commentary
Drill hole Information	<ul style="list-style-type: none"> A summary of all information material to the understanding of the exploration results including a tabulation of the following information for all Material drill holes: <ol style="list-style-type: none"> easting and northing of the drill hole collar elevation or RL (Reduced Level – elevation above sea level in metres) of the drill hole collar dip and azimuth of the hole down hole length and interception depth hole length. 	<ul style="list-style-type: none"> Details of the samples discussed in this announcement are in the body of the text. See Figures 2-4 for the location of surface sampling, drilling, and trenching activities at El Palmar.
	<ul style="list-style-type: none"> If the exclusion of this information is justified on the basis that the information is not Material and this exclusion does not detract from the understanding of the report, the Competent Person should clearly explain why this is the case. 	<ul style="list-style-type: none"> Information included in announcement.
Data aggregation methods	<ul style="list-style-type: none"> In reporting Exploration Results, weighting averaging techniques, maximum and/or minimum grade truncations (e.g. cutting of high grades) and cut-off grades are usually Material and should be stated. 	<ul style="list-style-type: none"> Weighted averages were calculated over reported intervals according to sample length. No grade cut-offs were applied.
	<ul style="list-style-type: none"> Where aggregate intercepts incorporate short lengths of high-grade results and longer lengths of low-grade results, the procedure used for such aggregation should be stated and some typical examples of such aggregations should be shown in detail. 	<ul style="list-style-type: none"> No aggregating of intervals undertaken at this stage.
	<ul style="list-style-type: none"> The assumptions used for any reporting of metal equivalent values should be clearly stated. 	<ul style="list-style-type: none"> Metal equivalents are not presented.
Relationship between mineralisation widths and intercept lengths	<ul style="list-style-type: none"> If the geometry of the mineralisation with respect to the drill-hole angle is known, its nature should be reported. 	<ul style="list-style-type: none"> The geometry of the mineralisation relative to the drill holes is not completely known at this stage of exploration. .
	<ul style="list-style-type: none"> If it is not known and only the down hole lengths are reported, there should be a clear statement to this effect (e.g. 'down hole length, true width not known'). 	<ul style="list-style-type: none"> True widths of mineralised lodes are not known at this stage.
Diagrams	<ul style="list-style-type: none"> Appropriate maps and sections (with scales) and tabulations of intercepts should be included for any significant discovery being reported. These should include, but not be limited to a plan view of drill hole collar locations and appropriate sectional views. 	<ul style="list-style-type: none"> See Figures 2-4 for maps showing distribution of samples.
Balanced reporting	<ul style="list-style-type: none"> Where comprehensive reporting of all Exploration Results is not practicable, representative reporting of both low and high grades and/or widths should be practiced to avoid misleading reporting of Exploration Results. 	<ul style="list-style-type: none"> Figures 2-4 above show the current interpretations of geology.
Other substantive exploration data	<ul style="list-style-type: none"> Other exploration data, if meaningful and material, should be reported) including (but not limited to): geological observations; geophysical survey results; geochemical survey results; bulk samples – size and method of treatment; metallurgical test results; bulk density, groundwater, geotechnical and rock characteristics; potential deleterious or contaminating substances. 	<ul style="list-style-type: none"> Figures 2-4 above show various datasets that are being used to identify target areas and to guide current and future drilling.
Further work	<ul style="list-style-type: none"> The nature and scale of planned further work (e.g. tests for lateral extensions or depth extensions or large-scale step-out drilling). 	<ul style="list-style-type: none"> The planned exploration program is outlined in the announcement.
	<ul style="list-style-type: none"> Diagrams clearly highlighting the areas of possible extensions, including the main geological interpretations and future drilling areas, provided this information is not commercially sensitive. 	<ul style="list-style-type: none"> See Figures 2-4 which show areas for further exploration.