

Limon Gold-Silver Deposit, Southern Ecuador

High-grade results continue to expand size of Limon discovery

Significant new mineralised zone defined on south side of Central Shoot

Key Points

- **Drilling continues to grow the Central Shoot at Limon with strong results including:**
 - **21.5m at 1.51g/t gold and 6.9g/t silver (1.59g/t AuEq) from 238.5m in LMDD047**
 - **High-grade zones include 4.6g/t gold and 800g/t silver over 0.8m from 27m in LMDD047**
 - **Both results are within a very broad intersection of 246m of gold and silver grading 0.53g/t AuEq from 14m (see Figure 3 and Table 1)**
- **These results support Sunstone's plan to establish a near surface resource at Limon to support open pit mining that will complement the Bramaderos porphyry discoveries**
- **Drilling at the Western Target 1 intersects anomalous silver from surface, highlighting scope for further growth**
- **Infill and expansion soil sampling has better defined new target areas with results up to 3g/t gold**

Sunstone Metals Ltd (ASX: STM) is pleased to announce further strong drilling results which continue to grow the size of its Limon gold-silver discovery in southern Ecuador.

The latest assays extend the Central Shoot mineralisation vertically above and below previous drilling and define new mineralised areas immediately south of the Central Shoot.

Gold and silver intersections include high-grade intervals and broad lower-grade intervals from near surface (see Table 1).

The results from hole LMDD047 are particularly encouraging because they define a new and significant mineralised zone on the south side of the Central Shoot. This was suggested by previous drilling but is now better defined and understood (Figure 2).

Two shallow holes (LMDD044 and LMDD045) were drilled into the Western target and intersected narrow intervals of gold within broad silver anomalism from surface. Although the zone of very high-grade gold in surface trenching was not intersected, the results from shallow drilling allow for a reinterpretation of the structural model, and follow-up drilling will be undertaken.

A program of anomaly infill and expansion soil sampling has been ongoing for several months. Of significance was a new greater than 3 g/t gold soil sample located approximately 250m east of the Central Shoot (Figure 1).

ASX ANNOUNCEMENT

The current 1,500m drill program is nearing completion, and additional assay results for seven more drill holes will follow over the next several weeks.

Sunstone Managing Director Patrick Duffy said the latest results continue to expand the size of the Limon discovery and show the strong potential for ongoing growth.

“We are creating value with virtually every drillhole because we continue to expand the known mineralisation and increase our understanding of the Limon system,” Mr Duffy said.

“These results further demonstrate the true scale and geometry of the gold-silver system and will help underpin a maiden resource estimate at Limon.

“We know we have established a large, mineralised gold-silver footprint, and defining a new mineralised zone on the south side of the Central Shoot continues to show how the Limon mineralisation continues to grow.

“The widths, grades and very shallow nature of the mineralisation all augur very well for an inaugural resource and open pit mining scenarios that will complement the Bramaderos porphyry discoveries.”

ASX ANNOUNCEMENT

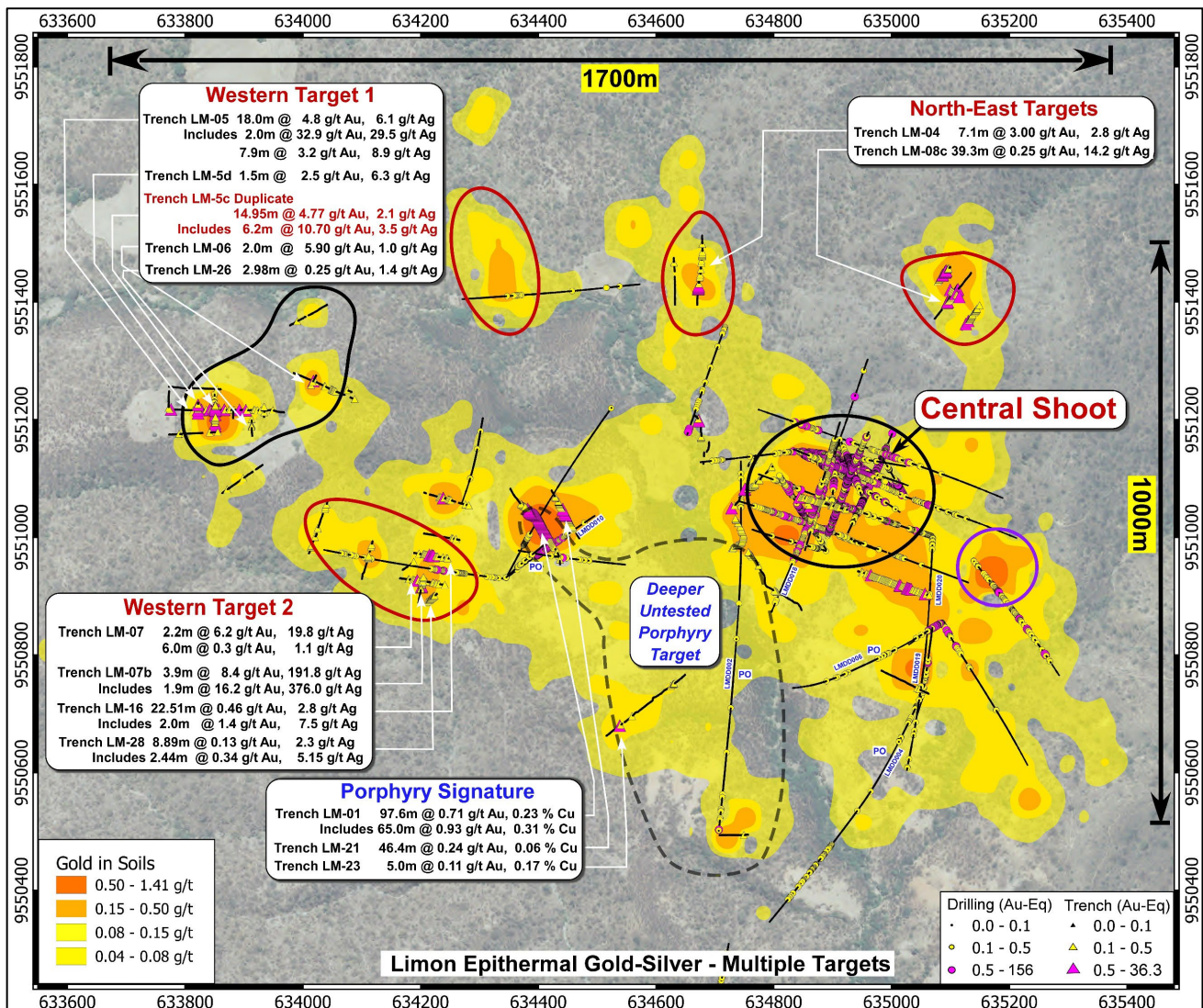


Figure 1: Limon gold in soils map showing extensive anomalous gold over an area of up to 1.7km x 700m. The black circled areas have seen partial drill testing. Red circled areas show the multiple epithermal gold-silver targets that remain to be drill tested. The area of recent soil sampling in the east which returned a 3.18 g/t Au result is circled in purple. The black dashed line shows the underlying Limon porphyry target outline.

Discussion of Results

LMDD044 and LMDD045 were drilled at Western Target 1 (Figure 1). They were shallow holes drilled underneath a significant gold response in Trench Tr_LM_5c of 6.2m at 10.7 g/t gold and 3.5 g/t silver. The drill holes did not repeat those results, and it is interpreted that a discrete gold shoot may plunge obliquely to the drilled section. Further and more detailed structural mapping and interpretation will be conducted in the vicinity of Trench Tr_LM_5c. Epithermal gold-silver veins can have complex distributions and low initial predictability of geometry. Additional short and close-spaced drill holes will be planned in this area and in the Western target 2 area to follow up on trench results and with updated structural models.

LMDD046 and 47 were drilled at the Central Shoot (Figures 1, 2 and 3) on a traverse to assess the extent of the mineralised zone south of Central Shoot and to infill an area above and below the main Central Shoot.

ASX ANNOUNCEMENT

Both target areas delivered strong gold responses over long intervals hosted in breccias (Table 1) and have contributed to significantly improving the geological model for this area of mineralisation. Drill holes LMDD048 through to 052 are being drilled to increase the footprint of mineralisation at the Central Shoot, while holes LMDD053 and 054 will test an interpreted south east extension of the mineralised domain.

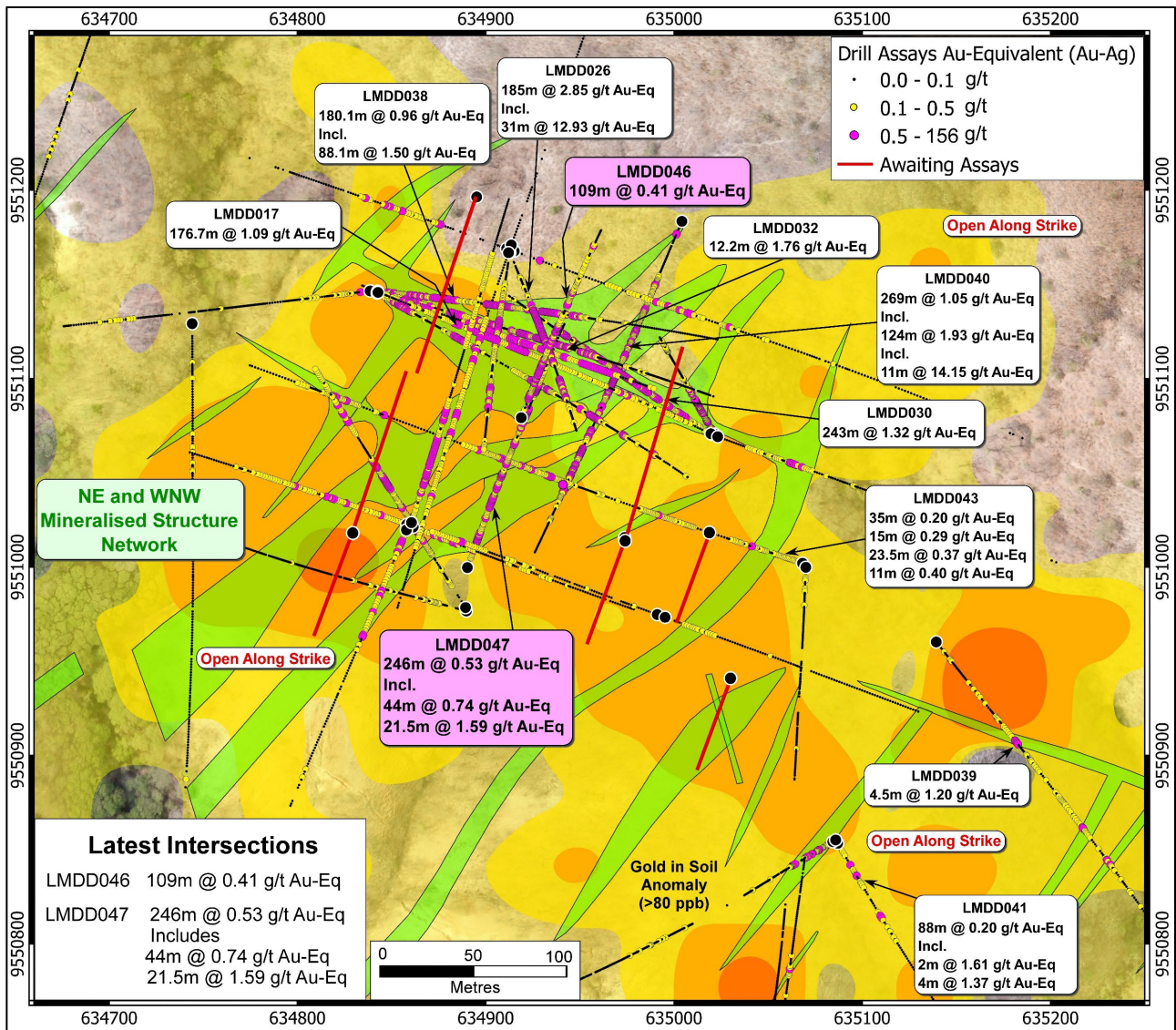


Figure 2: The Limon epithermal gold-silver system in plan view, showing multiple mineralised structures in green. High-grade domains are at intersections of NE and WNW trending structures. Several additional targets have been defined based on gold-in soil and zinc-in-soil anomalies, and structural interpretation. See Figure 4 for a broader context within the very large Limon target area.

ASX ANNOUNCEMENT

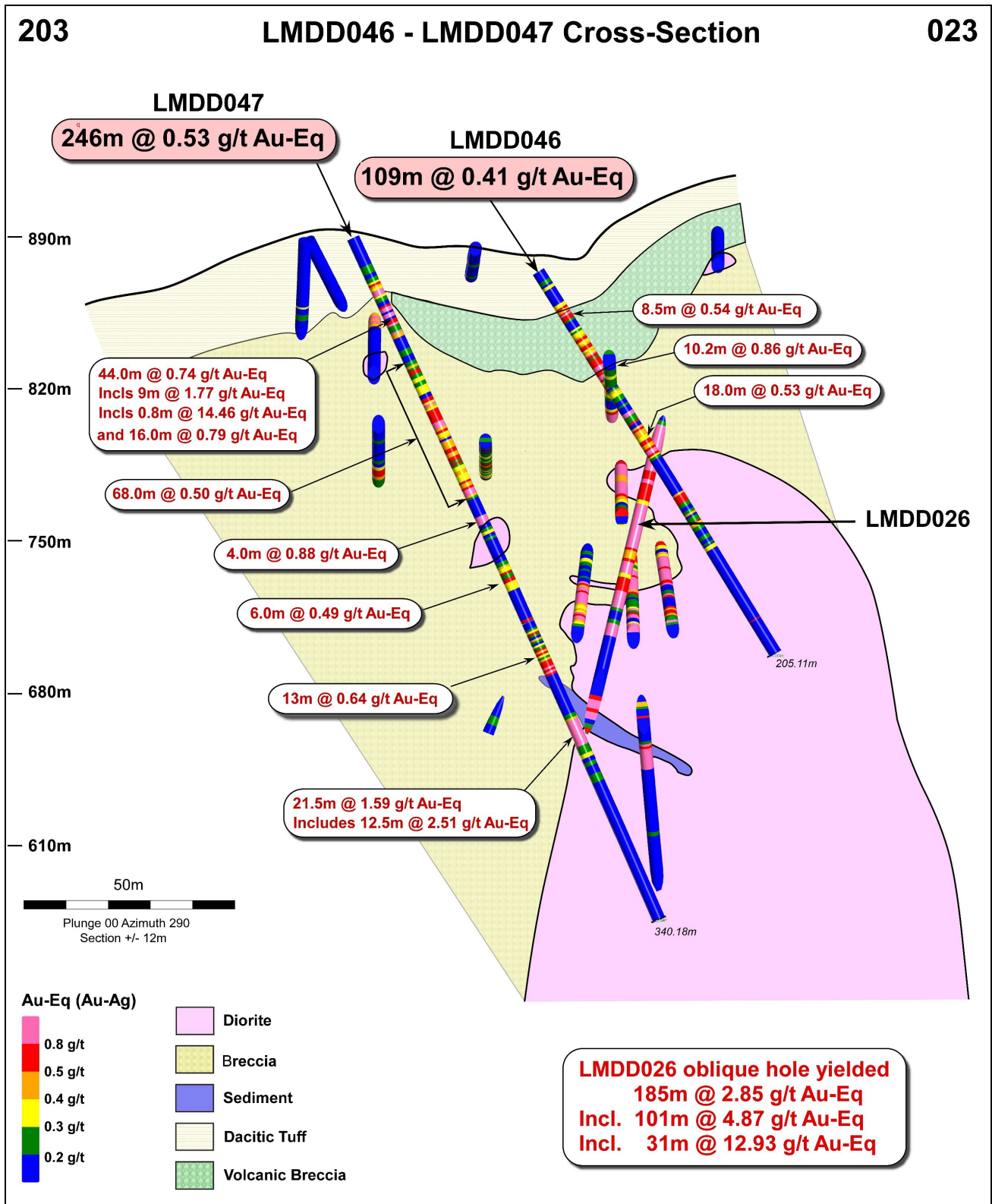


Figure 3: Cross section along drill holes LMDD046 and 047 showing new shallow mineralisation on the south (left hand side) side of the previously identified main Central Shoot in LMDD026.

ASX ANNOUNCEMENT

Table 1: Summary of mineralised epithermal intersections in the current drill program (assays received for 4 of 11 holes). AuEq is calculated using gold and silver only; there is no contribution from base metals.

Drill Hole	Limon Target Area	EOH (m)	From (m)	To (m)	Interval (m)	AuEq (g/t)	Au (g/t)	Ag (g/t)	
LMDD047	Central	340.18	14.0	260.0	246.0	0.53	0.39	11.6	
			14.0	58.0	44.0	0.74	0.32	34.1	
			<i>incl.</i>	20.0	29.0	9.0	1.77	0.67	90.2
			<i>incl.</i>	27.2	28.0	0.8	14.46	4.61	808.0
			<i>incl.</i>	34.0	50.0	16.0	0.79	0.34	36.7
				62.0	130.0	68.0	0.50	0.40	8.4
			<i>incl.</i>	126.0	129.0	3.0	1.38	0.81	46.5
				139.6	143.6	4.0	0.88	0.86	1.8
				164.6	176.5	12.0	0.43	0.37	4.6
			<i>incl.</i>	170.5	176.5	6.0	0.49	0.47	1.2
				191.2	192.3	1.2	0.66	0.45	17.6
				206.0	219.0	13.0	0.64	0.38	20.9
				238.5	260.0	21.5	1.59	1.51	6.9
			<i>incl.</i>	241.5	254.0	12.5	2.51	2.38	10.9
<i>incl.</i>	244.5	245.5	1.0	6.93	6.64	24.0			
LMDD046	Central	205.11	5.0	9.5	4.5	0.29	0.27	1.7	
			17.5	26.0	8.5	0.54	0.47	5.7	
			33.0	62.4	29.4	0.52	0.42	8.20	
			<i>incl.</i>	47.3	57.4	10.2	0.86	0.72	11.5
			76.0	78.0	2.0	1.10	1.03	5.3	
			81.0	99.0	18.0	0.53	0.37	13.02	
			<i>incl.</i>	96.0	98.0	2.0	1.02	0.81	17.5
				119.5	137.0	17.5	0.37	0.31	4.7
				119.5	124.5	5.0	0.55	0.52	2.7
				147.4	149.4	2.0	0.36	0.35	1.1
	186.9	187.5	0.5	0.75	0.65	7.9			
LMDD045	Western 1	94.51	0.4	52.3	51.9	0.08	0.06	1.8	
			26.0	27.0	1.0	0.46	0.41	4.5	
			48.6	49.5	0.9	0.46	0.42	3.4	
			88.9	90.0	1.1	0.89	0.86	2.7	
LMDD044	Western 1	79.07	0	77	77.0	0.07	0.05	1.5	
			0.0	1.1	1.1	0.30	0.29	1.3	
			45.0	47.0	2.0	0.26	0.23	2.8	
			53.6	54.6	1.0	0.24	0.22	1.2	
			68.0	69.0	1.0	0.24	0.22	1.5	

Table 2: Limon drill hole location details for LMDD044 – 047.

Drill Hole Number	Easting (PSAD56)	Northing (PSAD56)	RL (m)	Dip (degrees)	Azimuth (PSAD56 Grid) (degrees)	EOH (m)
LMDD044	633850.024	9551243.202	953.265	-40	180	79.07
LMDD045	633850.028	9551243.774	953.183	-60	180	94.51
LMDD046	634918.852	9551079.230	873.377	-58	019	205.11
LMDD047	634890.239	9550999.707	888.755	-65	020	340.18

ASX ANNOUNCEMENT

About Bramaderos

The Bramaderos Project straddles the Pan American highway and is close to available hydroelectric power, supporting the economics of potential development opportunities. Ecuador sources 93% of its power from renewables and is ideally placed to participate in the global demand for clean energy-sourced metals. The project is also supported by nearby commercial airports and significant cities (Loja, population 200,000) and has strong community support. The project area is covered by three valid concessions and exploration plans are in place to continue to explore multiple gold-silver epithermal and gold-copper-silver porphyry opportunities.

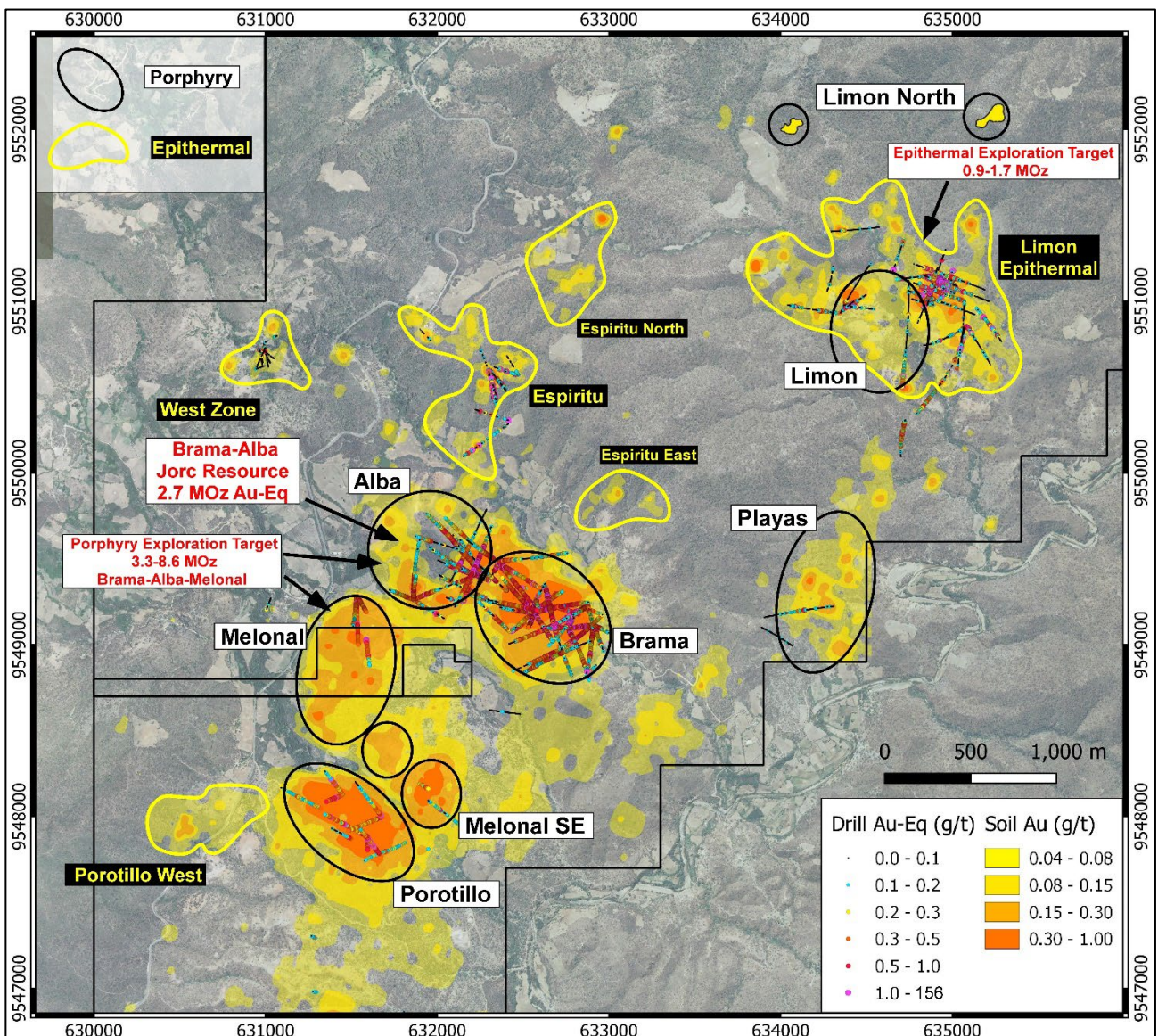


Figure 4: The Bramaderos concession showing the location of Limon and other gold-copper porphyry (black outlines) and gold-silver epithermal targets (yellow outlines). The background image is gold-in-soil, highlighting the potential scale increase to be delivered with more drilling at Bramaderos across multiple targets. Drilling activity during 2024 has been focussed on the Limon gold-silver epithermal opportunity.

ASX ANNOUNCEMENT

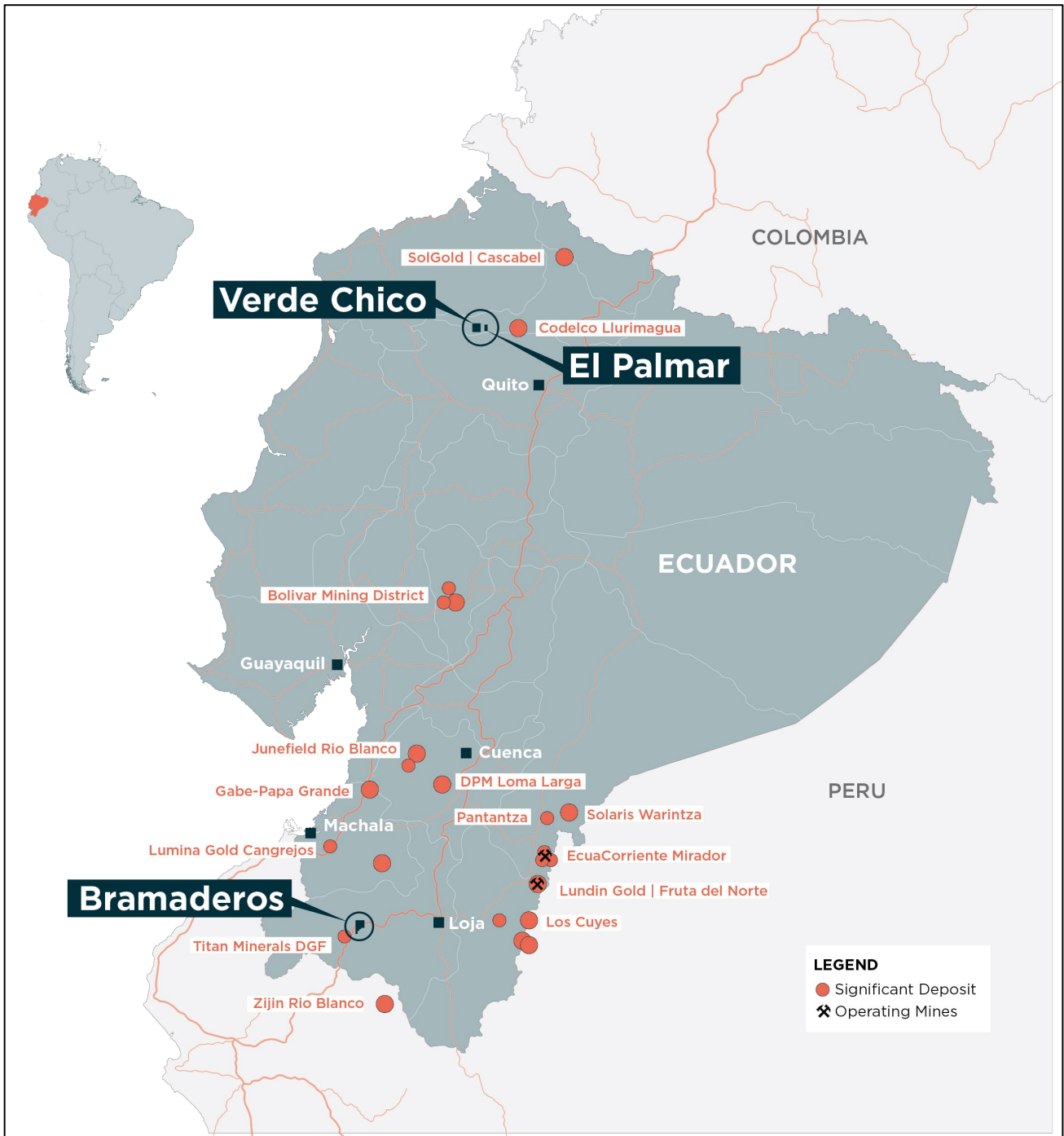


Figure 5: Location of Sunstone’s Bramaderos and El Palmar projects, Ecuador.

For further information, please visit www.sunstonemetals.com.au

Mr Patrick Duffy
 Managing Director
 Sunstone Metals Ltd
 Tel: 07 3368 9888
 Email: info@sunstonemetals.com.au

Media:
 Paul Armstrong
 Read Corporate
 +61 8 9388 1474

ASX ANNOUNCEMENT

About Sunstone Metals

Sunstone has an advanced portfolio of exploration projects in Ecuador. The portfolio comprises:

The Bramaderos Gold-Copper Project where Sunstone owns an 87.5% interest, and SolGold Canada, Inc. (formerly Cornerstone Capital Resources) a subsidiary of SolGold, holding 12.5% (loan carried through to start of commercial production) (see ASX announcement dated 10 April 2017, 28 August 2019, and 7 January 2020). The Bramaderos gold-copper project is located in Loja province, southern Ecuador, and is highly prospective for the discovery of large porphyry gold-copper systems, as well as high-grade epithermal gold systems. The Bramaderos concession is host to multiple fertile mineralised systems with significant discovery potential.

The Brama-Alba deposit, within the Bramaderos concession, contains an initial Mineral Resource estimate of 156Mt at 0.53g/t AuEq for 2.7Moz gold-equivalent*. In addition to this is the Bramaderos project porphyry Exploration Target of between 3.3Moz and 8.6Moz AuEq within 255 to 360Mt at a grade between 0.40 and 0.74g/t AuEq (see ASX release dated 13 December 2022), and the Limon epithermal gold-silver exploration target of 0.9 – 1.7mill oz AuEq within 30 – 44mill tonnes at a grade of between 0.9 – 1.2g/t AuEq (see ASX release dated 5 February 2024).

JORC Classification	Tonnage (Mt)	Au (g/t)	Cu (%)	Ag (g/t)	AuEq (g/t)	AuEq* (Mozs)
Indicated	9	0.38	0.09	1.1	0.53	0.2
Inferred	147	0.35	0.11	1.3	0.53	2.5
Total	156	0.35	0.11	1.3	0.53	2.7

The Company confirms that it is not aware of any new information or data that materially affects the information included in the original market announcement for the Mineral Resource estimate and Exploration Target referred to above and, that all material assumptions and technical parameters underpinning the estimates continue to apply and have not materially changed. The Company confirms that the form and context in which the Competent Person's findings are presented have not been materially modified from the original market announcement.

The potential quantity and grade of the Exploration Target is conceptual in nature. There has been insufficient exploration to estimate a Mineral Resource for the target area reported. It is uncertain if further exploration will result in the estimation of a Mineral Resource.

*The gold equivalent calculation formula for porphyry gold-copper-silver mineralisation is $AuEq(g/t) = (Au \text{ grade} \times Au \text{ price} \times Au \text{ recov} / 31.1035) + (Ag \text{ grade} \times Ag \text{ price} \times Ag \text{ recov} / 31.1035) + (Cu \text{ grade} \times Cu \text{ price} \times Cu \text{ recov} / 100) / (Au \text{ price} \times Au \text{ recov} / 31.1035)$. The prices used were US\$1,800/oz gold and US\$9,500/t copper and US\$22/oz silver. Recoveries are estimated at 89% for gold, 85% for copper, and 60% for silver based on metallurgical studies.

*The gold equivalent calculation formula for epithermal gold-silver mineralisation is $AuEq(g/t) = Au(ppm) + (Ag(ppm)/82)$. The prices used were US\$1,800/oz gold and US\$22/oz silver. Recoveries are estimated at over 90% for gold and 90% for silver from metallurgical studies.

In Sunstone's opinion, all the elements included in the metal equivalents calculation have reasonable potential to be recovered and sold.

The El Palmar Copper-Gold Project where Sunstone holds 74.5% of the highly prospective 800ha El Palmar gold-copper porphyry project in Ecuador. Sunstone can acquire 100% through a Staged Acquisition Agreement. A Staged Acquisition Agreement to acquire the nearby Verde Chico Project has also been signed. The El Palmar and Verde Chico gold-copper projects are located in Imbabura province, northern Ecuador, within the same geological belt that includes the giant Alpala, Tandayama-America and Llurimagua porphyry copper-gold and copper-molybdenum deposits.

ASX ANNOUNCEMENT

Competent Persons Statement

The information in this report that relates to exploration results is based upon information reviewed by Dr Bruce Rohrlach who is a Member of the Australasian Institute of Mining and Metallurgy. Dr Rohrlach is a full-time employee of Sunstone Metals Ltd and has sufficient experience which is relevant to the style of mineralisation and type of deposit under consideration and to the activity which he is undertaking to qualify as a Competent Person as defined in the 2012 Edition of the “Australasian Code for Reporting of Exploration Results, Mineral Resources and Ore Reserves”. Dr Rohrlach consents to the inclusion in the report of the matters based on his information in the form and context in which it appears.

Mr Patrick Duffy, Managing Director of Sunstone Metals Ltd., has authorised this announcement to be lodged with the ASX.

ASX ANNOUNCEMENT

TABLE 1 – Section 1: Sampling Techniques and Data

Criteria	JORC Code explanation	Commentary
Sampling techniques	<ul style="list-style-type: none"> Nature and quality of sampling (e.g. cut channels, random chips, or specific specialised industry standard measurement tools appropriate to the minerals under investigation, such as downhole gamma sondes, or handheld XRF instruments, etc.). These examples should not be taken as limiting the broad meaning of sampling. 	<ul style="list-style-type: none"> The results announced here are from diamond drilling samples. The drill core sampling was carried out using half core, generally at 1-2m intervals.
	<ul style="list-style-type: none"> Include reference to measures taken to ensure sample representivity and the appropriate calibration of any measurement tools or systems used. 	<ul style="list-style-type: none"> Core recovery was good, and core aligned prior to splitting.
	<ul style="list-style-type: none"> Aspects of the determination of mineralisation that are Material to the Public Report. In cases where 'industry standard' work has been done this would be relatively simple (e.g. 'reverse circulation drilling was used to obtain 1 m samples from which 3 kg was pulverised to produce a 30 g charge for fire assay'). In other cases, more explanation may be required, such as where there is coarse gold that has inherent sampling problems. Unusual commodities or mineralisation types (e.g. submarine nodules) may warrant disclosure of detailed information. 	<ul style="list-style-type: none"> Diamond drilling, rock chip and channel sampling points have been guided by geological mapping. The drill samples from Limon were dried, crushed to 70% passing 2mm, Split 1000g and pulverised to 85% passing 75microns. A 20g portion of this sample was used for multi-element analysis (IMS-230) and a 30g sample for Fire Assay Au (FAS-111).
Drilling techniques	<ul style="list-style-type: none"> Drill type (eg core, reverse circulation, open-hole hammer, rotary air blast, auger, Bangka, sonic, etc) and details (e.g. core diameter, triple or standard tube, depth of diamond tails, face-sampling bit or other type, whether core is oriented and if so, by what method, etc). 	<ul style="list-style-type: none"> Current drilling by Sunstone is diamond core drilling and has drilled to various depths up to 720m. The diamond core was drilled delivering either HTW (70.9mm) or NTW (56mm) core. Drill core is oriented using a Reflex ACT II tool for bottom of hole.
Drill sample recovery	<ul style="list-style-type: none"> Method of recording and assessing core and chip sample recoveries and results assessed. 	<ul style="list-style-type: none"> Diamond core recovery data for the Limon drilling was measured for each drill run and captured in a digital logging software package. The data has been reviewed and core recovery was approximately 100% throughout.
	<ul style="list-style-type: none"> Measures taken to maximise sample recovery and ensure representative nature of the samples. 	<ul style="list-style-type: none"> Core recovery at Limon was good, no extra measures were taken to maximise sample recovery.
	<ul style="list-style-type: none"> Whether a relationship exists between sample recovery and grade and whether sample bias may have occurred due to preferential loss/gain of fine/coarse material. 	<ul style="list-style-type: none"> No relationship between sample recovery and grade has been established.
Logging	<ul style="list-style-type: none"> Whether core and chip samples have been geologically and geotechnically logged to a level of detail to support appropriate Mineral Resource estimation, mining studies and metallurgical studies. 	<ul style="list-style-type: none"> Drill samples, trench samples and rock chips were logged for lithology, weathering, structure, mineralogy, mineralisation, colour, and other features. Logging and sampling were carried out according to Sunstone's internal protocols and QAQC procedures which comply with industry standards.
	<ul style="list-style-type: none"> Whether logging is qualitative or quantitative in nature. Core (or costean, channel, etc.) photography. 	<ul style="list-style-type: none"> Drill samples, and trench and rock chip samples are logged for lithology, weathering, structure, mineralogy, mineralisation, colour, and other features.
	<ul style="list-style-type: none"> The total length and percentage of the relevant intersections logged. 	<ul style="list-style-type: none"> The drill holes and trenches are logged in full, from start to finish of the excavation.
Sub-sampling techniques and sample preparation	<ul style="list-style-type: none"> If core, whether cut or sawn and whether quarter, half or all core taken. 	<ul style="list-style-type: none"> Half core was used to provide the samples that were submitted for assay. Quarter core samples were taken ~1 in every 28 samples for duplicate sampling. The remaining core is left in the core trays.
	<ul style="list-style-type: none"> If non-core, whether riffled, tube sampled, rotary split, etc. and whether sampled wet or dry. 	<ul style="list-style-type: none"> N/A.
	<ul style="list-style-type: none"> For all sample types, the nature, quality and appropriateness of the sample preparation technique. 	<ul style="list-style-type: none"> Surface and drill core samples from Limon were sent to the LAC y Asociados Cia. Ltda. Sample Preparation Facility in Cuenca, Ecuador for sample preparation. The standard sample preparation for drill core samples (Code PRP-910) is: Drying the sample, crushing to size

ASX ANNOUNCEMENT

Criteria	JORC Code explanation	Commentary
	<ul style="list-style-type: none"> <i>Quality control procedures adopted for all sub-sampling stages to maximise representivity of samples.</i> <i>Measures taken to ensure that the sampling is representative of the in-situ material collected, including for instance results for field duplicate/second-half sampling.</i> <i>Whether sample sizes are appropriate to the grain size of the material being sampled.</i> 	<p>fraction 70% <2mm and splitting the sample to a 250g portion by riffle or Boyd rotary splitter. The 250g sample is then pulverised to >85% passing 75 microns and then split into two 50g pulp samples. Then one of the pulp samples was sent to the MS Analytical Laboratory in Vancouver (Unit 1, 20120 102nd Avenue, Langley, BC V1M 4B4, Canada) for gold and base metal analysis.</p> <ul style="list-style-type: none"> The sample preparation is carried out according to industry standard practices using highly appropriate sample preparation techniques. Sunstone used an industry standard QAQC programme involving Certified Reference Materials “standards” and blank samples, which were introduced in the assay batches. Standards (Certified Reference Materials) or analytical blanks were submitted at a rate of 1 in 28 samples. Field duplicates were also taken at a rate of approximately 1 in 28 samples. The check or duplicate assay results are reported along with the sample assay values in the final analysis report. For diamond core, the routine sample procedure is to always take the half/quarter core to the right of the orientation line (looking down hole) or the cut line (in cases where the orientation line was not reliable). Once assay results are received the results from duplicate samples are compared with the corresponding routine sample to ascertain whether the sampling is representative. Sample sizes are considered to be appropriate for the style of sampling undertaken and the grain size of the material, and correctly represent the style and type of mineralisation at the exploration stage.
<p>Quality of assay data and laboratory tests</p>	<ul style="list-style-type: none"> <i>The nature, quality and appropriateness of the assaying and laboratory procedures used and whether the technique is considered partial or total.</i> <i>For geophysical tools, spectrometers, handheld XRF instruments, etc., the parameters used in determining the analysis including instrument make and model, reading times, calibrations factors applied and their derivation, etc.</i> <i>Nature of quality control procedures adopted (e.g. standards, blanks, duplicates, external laboratory checks) and whether acceptable levels of accuracy (i.e. lack of bias) and precision have been established.</i> 	<ul style="list-style-type: none"> Sunstone uses a fire assay gold technique for Au assays (FAS-111) and a four acid multi element technique (IMS-230) for a suite of 48 elements. FAS-111 involves Au by Fire Assay on a 30-gram aliquot, fusion and atomic absorption spectroscopy (AAS) at trace levels. IMS-20 is considered a near total 4 acid technique using a 20g aliquot followed by multi-element analysis by ICP-AES/MS at ultra-trace levels. This analysis technique is considered suitable for this style of mineralisation. Handheld XRF data, together with detailed geological logging, are used as a guide to areas of potential mineralisation and samples from these areas are sent for laboratory analysis as described above. Standards, blanks and duplicates are inserted ~1/28 samples. The values of the standards range from low to high grade and are considered appropriate to monitor performance of values near cut-off and near the mean grade of the deposit. The check sampling results are monitored, and performance issues are communicated to the laboratory if necessary.
	<ul style="list-style-type: none"> <i>The verification of significant intersections by either independent or alternative company personnel.</i> 	<ul style="list-style-type: none"> Procedure checks have been completed by the Competent Person for exploration results for this announcement.

ASX ANNOUNCEMENT

Criteria	JORC Code explanation	Commentary																				
Verification of sampling and assaying	<ul style="list-style-type: none"> The use of twinned holes. 	<ul style="list-style-type: none"> Twin holes have not been drilled in these areas. 																				
	<ul style="list-style-type: none"> Documentation of primary data, data entry procedures, data verification, data storage (physical and electronic) protocols. 	<ul style="list-style-type: none"> Sunstone sampling data were imported and validated using Excel. 																				
	<ul style="list-style-type: none"> Discuss any adjustment to assay data. 	<ul style="list-style-type: none"> Assay data were not adjusted. Core loss intervals are assigned assay values of zero where present. 																				
Location of data points	<ul style="list-style-type: none"> Accuracy and quality of surveys used to locate drill holes (collar and down-hole surveys), trenches, mine workings and other locations used in Mineral Resource estimation. 	<ul style="list-style-type: none"> Sample co-ordinates are located by GPS and for trench samples measured along the length of the trench. 																				
	<ul style="list-style-type: none"> Specification of the grid system used. 	<ul style="list-style-type: none"> Ecuador projection parameters: <table border="1" style="margin-left: 20px;"> <thead> <tr> <th style="text-align: center;">Parameter</th> <th style="text-align: center;">Value</th> </tr> </thead> <tbody> <tr> <td>Reference Ellipsoid</td> <td>International 1924</td> </tr> <tr> <td>Semi Major Axis</td> <td></td> </tr> <tr> <td>Inverse Flattening (1/f)</td> <td></td> </tr> <tr> <td>Type of Projection</td> <td>UTM Zone -17S (Datum PSAD56)</td> </tr> <tr> <td>Central Meridian:</td> <td>-81.0000</td> </tr> <tr> <td>Latitude of Origin</td> <td>0.0000</td> </tr> <tr> <td>Scale on Central Meridian</td> <td>0.9996</td> </tr> <tr> <td>False Northing</td> <td>10000000</td> </tr> <tr> <td>False Easting</td> <td>500000</td> </tr> </tbody> </table> 	Parameter	Value	Reference Ellipsoid	International 1924	Semi Major Axis		Inverse Flattening (1/f)		Type of Projection	UTM Zone -17S (Datum PSAD56)	Central Meridian:	-81.0000	Latitude of Origin	0.0000	Scale on Central Meridian	0.9996	False Northing	10000000	False Easting	500000
	Parameter	Value																				
Reference Ellipsoid	International 1924																					
Semi Major Axis																						
Inverse Flattening (1/f)																						
Type of Projection	UTM Zone -17S (Datum PSAD56)																					
Central Meridian:	-81.0000																					
Latitude of Origin	0.0000																					
Scale on Central Meridian	0.9996																					
False Northing	10000000																					
False Easting	500000																					
<ul style="list-style-type: none"> Quality and adequacy of topographic control. 	<ul style="list-style-type: none"> The topographic control was compared against published maps and satellite imagery and found to be good quality. 																					
Data spacing and distribution	<ul style="list-style-type: none"> Data spacing for reporting of Exploration Results. 	<ul style="list-style-type: none"> The drill core samples were collected from diamond drill holes from the Limon target, and with sample length generally ranging between 1.0 – 2.0m. 																				
	<ul style="list-style-type: none"> Whether the data spacing, and distribution is sufficient to establish the degree of geological and grade continuity appropriate for the Mineral Resource and Ore Reserve estimation procedure(s) and classifications applied. 	<ul style="list-style-type: none"> The data from these samples does not contribute to any resource estimate nor implies any grade continuity. 																				
	<ul style="list-style-type: none"> Whether sample compositing has been applied. 	<ul style="list-style-type: none"> No sample compositing was done. 																				
Orientation of data in relation to geological structure	<ul style="list-style-type: none"> Whether the orientation of sampling achieves unbiased sampling of possible structures and the extent to which this is known, considering the deposit type. 	<ul style="list-style-type: none"> Drilling orientations were appropriate for the interpreted geology providing representative samples. Trench orientations and rock chip locations were appropriate for the interpreted geology providing representative samples. 																				
	<ul style="list-style-type: none"> If the relationship between the drilling orientation and the orientation of key mineralised structures is considered to have introduced a sampling bias, this should be assessed and reported if material. 	<ul style="list-style-type: none"> No sampling bias is expected at this stage. 																				
Sample security	<ul style="list-style-type: none"> The measures taken to ensure sample security. 	<ul style="list-style-type: none"> Sunstone sampling procedures indicate individual samples were given due attention. Sample security was managed through sealed individual samples and sealed bags of multiple samples for secure delivery to the laboratory by permanent staff of the joint venture. MS Analytical is an internationally accredited laboratory that has all its internal procedures heavily scrutinised in order to maintain their accreditation. MS Analytical is accredited to ISO/IEC 17025 2005 Accredited Methods. 																				

ASX ANNOUNCEMENT

Criteria	JORC Code explanation	Commentary
Audits or reviews	<ul style="list-style-type: none"> The results of any audits or reviews of sampling techniques and data. 	<ul style="list-style-type: none"> Sunstone’s sampling techniques and data have been audited multiple times by independent mining consultants during various project assessments. These audits have concluded that the sampling techniques and data management are to industry standards. All historical data has been validated to the best degree possible and migrated into a database.

TABLE 1 – Section 2: Exploration Results

Criteria	JORC Code explanation	Commentary
Mineral tenement and land tenure status	<ul style="list-style-type: none"> Type, reference name/number, location and ownership including agreements or material issues with third parties such as joint ventures, partnerships, overriding royalties, native title interests, historical sites, wilderness or national park and environmental settings. 	<ul style="list-style-type: none"> The Bramaderos Exploration Concession is located in the Loja Province of southern Ecuador. The concession was granted to La Plata Minerales S.A. (“PLAMIN”) in January 2017. PLAMIN is a subsidiary of Sunstone Metals Ltd. The concession is subject to a Joint Venture between SolGold Canada Inc. (12.5%) and Sunstone Metals Ltd. (87.5%). There are no declared wilderness areas or national parks within or adjoining the concession area. There are no established native title interests.
	<ul style="list-style-type: none"> The security of the tenure held at the time of reporting along with any known impediments to obtaining a licence to operate in the area. 	<ul style="list-style-type: none"> The Bramaderos Exploration Concession was granted to La Plata Minerales S.A. (“PLAMIN”) in January 2017. PLAMIN is now a subsidiary of Sunstone Metals Ltd. The Bramaderos Concession is subject to a Joint Venture between Sunstone Metals and SolGold. Sunstone has an 87.5% interest in the JV. SolGold’s 12.5% interest is loan carried.
Exploration done by other parties	<ul style="list-style-type: none"> Acknowledgment and appraisal of exploration by other parties. 	<ul style="list-style-type: none"> The historic exploration at Bramaderos was completed by various groups over the period 1970-1984, 2001-2002 and 2004-2007. Most of the readily available historic data has been acquired and compiled into databases and a GIS project. Exploration by other parties has included stream sediment surveys, geological mapping, rock chip sampling (888 samples) and grid-based soil sampling (1324 samples), trenching and channel sampling (17 trenches), ground magnetic surveys (31 line kilometres), electrical IP surveys and diamond drilling (10426m).
Geology	<ul style="list-style-type: none"> Deposit type, geological setting and style of mineralisation. 	<ul style="list-style-type: none"> The deposit style being explored for includes intrusion-related and stockwork hosted porphyry Au-Cu systems plus epithermal gold-silver-polymetallic veins. The setting at Limon is a volcanic arc setting of Cretaceous age intrusions.
Drill hole Information	<ul style="list-style-type: none"> A summary of all information material to the understanding of the exploration results including a tabulation of the following information for all Material drill holes: <ol style="list-style-type: none"> easting and northing of the drill hole collar elevation or RL (Reduced Level – elevation above sea level in metres) of the drill hole collar dip and azimuth of the hole down hole length and interception depth hole length. 	<ul style="list-style-type: none"> Details of the samples discussed in this announcement are in the body of the text. See Figures 1-3 for the location of soil sampling and drilling activities at Limon, and nearby areas.
	<ul style="list-style-type: none"> If the exclusion of this information is justified on the basis that the information is not Material and this exclusion does not detract from the understanding of the report, the Competent Person should clearly explain why this is the case. 	<ul style="list-style-type: none"> Information included in announcement.

ASX ANNOUNCEMENT

Criteria	JORC Code explanation	Commentary
Data aggregation methods	<ul style="list-style-type: none"> <i>In reporting Exploration Results, weighting averaging techniques, maximum and/or minimum grade truncations (e.g. cutting of high grades) and cut-off grades are usually Material and should be stated.</i> 	<ul style="list-style-type: none"> Weighted averages were calculated over reported intervals according to sample length. No grade cut-offs were applied.
	<ul style="list-style-type: none"> <i>Where aggregate intercepts incorporate short lengths of high-grade results and longer lengths of low-grade results, the procedure used for such aggregation should be stated and some typical examples of such aggregations should be shown in detail.</i> 	<ul style="list-style-type: none"> No aggregating of intervals undertaken at this stage.
	<ul style="list-style-type: none"> <i>The assumptions used for any reporting of metal equivalent values should be clearly stated.</i> 	<ul style="list-style-type: none"> Preliminary metallurgical studies are indicating a standard grind with a flotation circuit. Stage one will recover copper and the majority of gold as a saleable concentrate. Stage two is a finer grind with a cyanide leach for gold on site. Current, overall estimated recoveries for the combined process are 86% for copper and 89% for gold.
Relationship between mineralisation widths and intercept lengths	<ul style="list-style-type: none"> <i>If the geometry of the mineralisation with respect to the drill-hole angle is known, its nature should be reported.</i> 	<ul style="list-style-type: none"> Figures 1-4 show the interpreted strike orientation of the mineralised lodes based on mapping and interpretation of detailed magnetic data.
	<ul style="list-style-type: none"> <i>If it is not known and only the down hole lengths are reported, there should be a clear statement to this effect (e.g. 'down hole length, true width not known').</i> 	<ul style="list-style-type: none"> True widths of mineralised lodes are not known at this stage.
Diagrams	<ul style="list-style-type: none"> <i>Appropriate maps and sections (with scales) and tabulations of intercepts should be included for any significant discovery being reported. These should include, but not be limited to a plan view of drill hole collar locations and appropriate sectional views.</i> 	<ul style="list-style-type: none"> See Figures 1-3 for maps showing distribution of samples.
Balanced reporting	<ul style="list-style-type: none"> <i>Where comprehensive reporting of all Exploration Results is not practicable, representative reporting of both low and high grades and/or widths should be practiced to avoid misleading reporting of Exploration Results.</i> 	<ul style="list-style-type: none"> Figures 1-3 show the current interpretations of geology.
Other substantive exploration data	<ul style="list-style-type: none"> <i>Other exploration data, if meaningful and material, should be reported) including (but not limited to): geological observations; geophysical survey results; geochemical survey results; bulk samples – size and method of treatment; metallurgical test results; bulk density, groundwater, geotechnical and rock characteristics; potential deleterious or contaminating substances.</i> 	<ul style="list-style-type: none"> Figures 1-3 above show various datasets that are being used to identify target areas and to guide current and future drilling.
Further work	<ul style="list-style-type: none"> <i>The nature and scale of planned further work (e.g. tests for lateral extensions or depth extensions or large-scale step-out drilling).</i> 	<ul style="list-style-type: none"> The planned exploration program is outlined in the announcement.
	<ul style="list-style-type: none"> <i>Diagrams clearly highlighting the areas of possible extensions, including the main geological interpretations and future drilling areas, provided this information is not commercially sensitive.</i> 	<ul style="list-style-type: none"> See Figures 1-4 which show areas for further exploration.