

**SUNSTONE**  
METALS

# DISCLAIMER

## DISCLAIMER

To the maximum extent permitted by law, no representation, warranty or undertaking, express or implied, is made and, to the maximum extent permitted by law, no responsibility or liability is accepted by Sunstone or any of its officers, employees, agents or consultants or any other person as to the adequacy, accuracy, completeness or reasonableness of this Presentation. To the maximum extent permitted by law, no responsibility for any errors or omissions from this Presentation whether arising out of negligence or otherwise is accepted.

This Presentation contains general information about Sunstone Metals Limited (Sunstone) which is in the business of exploring for minerals which is a speculative and risky venture. It does not purport to contain all the information that a prospective investor may require. The Presentation should not be considered as an offer or invitation to subscribe for or purchase of any securities in Sunstone and no agreement to subscribe for securities will be entered into on the basis of this Presentation. Potential investors should conduct their own investigation and analysis and should check the accuracy, reliability, and completeness of the information provided and obtain independent and specific advice from appropriate professional advisors.

## FORWARD-LOOKING STATEMENTS

This Presentation includes certain statements that may be deemed “forward-looking statements”. All statements in this Presentation, other than statements of historical facts, that address future activities and events or developments that Sunstone expects, are forward looking statements.

Although Sunstone believes the expectations expressed in such forward-looking statements are based on reasonable assumptions, such statements are not guarantees of future performance and actual results or developments may differ materially from those in the forward-looking statements. Factors that could cause actual results to differ materially from those in forward-looking statements include market prices, continued availability of capital and financing, and general economic, market or business conditions.

Investors are cautioned that any such statements are not guarantees of future performance and that actual results or developments may differ materially from those projected in forward-looking statements.

# A COMPELLING INVESTMENT OPPORTUNITY

Three projects | Copper and Gold | Discovery and Development



ECUADOR  
**GOLD &  
COPPER**

**BRAMADEROS  
PROJECT**

**Delivers large  
upside  
opportunity**

Bramaderos contains fertile mineralised porphyry and epithermal systems with strong potential to host a world-class discovery

SWEDEN  
**COPPER**

**VISCARIA  
PROJECT**

**Protects downside  
risk; provides  
upside opportunity**

PFS and permitting to develop underway; strong exploration upside

Leveraged to copper price – at US\$3/lb this is a very attractive project

FINLAND  
**GOLD &  
LITHIUM**

**SOUTHERN  
FINLAND GOLD  
PROJECT**

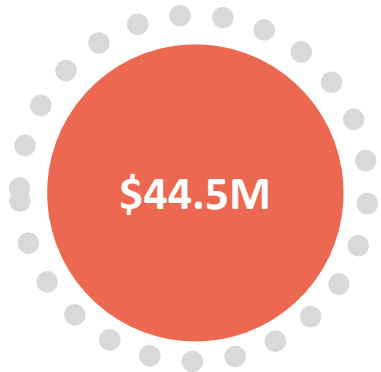
Multiple gold occurrences identified with limited previous exploration

First drilling program delivered 23.5m at 3.3g/t gold

**STM's low market capitalisation offers huge leverage from a global portfolio with focus on gold and copper**

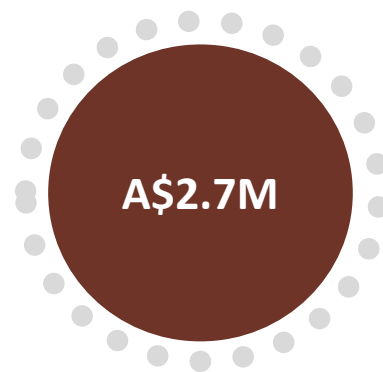
# CORPORATE

Listed on the Australian Stock Exchange **ASX:STM**



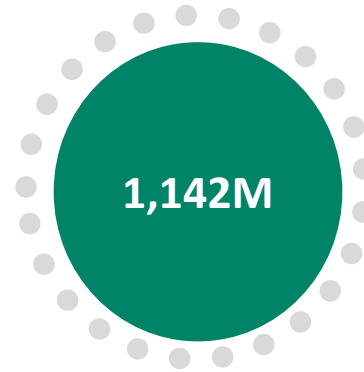
## MARKET CAPITALISATION

Tightly held  
At share price of A\$0.039 – 30 day  
VWAP



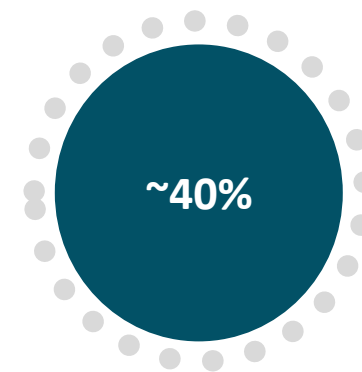
## CASH

As at 30.06.18 - unaudited



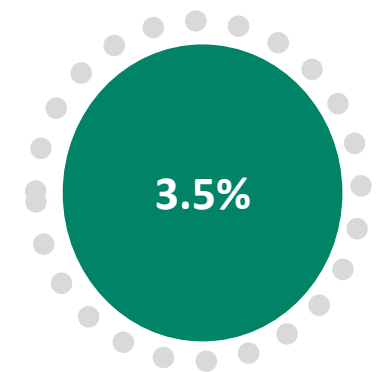
## SHARES ON ISSUE

As at 31.03.18



## TOP 10 SHAREHOLDERS

Hold almost half of all  
shares on issue



## BOARD & MANAGEMENT

Have participated in all placements  
in last 4 years

### Substantial Shareholders

Darren Carter (UK)	8.8%
Valbonne II	6.7%
Marilei International	5.0%

# HIGHLY EXPERIENCED MANAGEMENT TEAM



**MALCOLM NORRIS**  
CEO & MANAGING DIRECTOR

Geologist and Business Development. Track record of discovery and growth. Previously with WMC Resources. Led team that discovered Tujuh Bukit porphyry Cu-Au in Indonesia with Intrepid Mines. Former CEO of SolGold and secured Cascabel Cu-Au project in Ecuador.



**GAVIN LEICHT**  
CFO & COMPANY SECRETARY

Finance professional with significant experience in developing and financing copper and gold projects through to production including marketing of copper concentrates.



**RAY ROBINSON**  
GENERAL MANAGER  
STUDIES & TECHNICAL SERVICES

Mining engineer with over 20 years operational, studies and construction experience worldwide. Delivered PEA, PFS and DFS level studies from 0.5Mtpa underground epithermal gold developments, 10Mtpa gold oxide heap leach projects to 40Mtpa copper-gold concentrator plants.



**DR. BRUCE ROHRLACH**  
GENERAL MANAGER GEOLOGY

Geologist who has played a key role in several significant discoveries and feasibility studies. Extensive international experience with both major and junior mining and exploration companies. Lead the technical teams that discovered Tujuh Bukit and Cascabel porphyry copper-gold deposits.



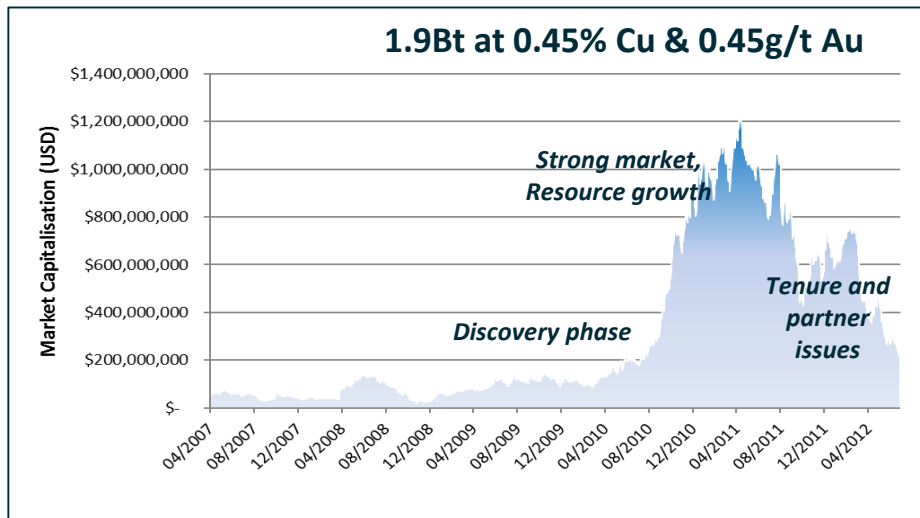
**DAMIEN MIZOW**  
EXPLORATION MANAGER

Geologist with 12 years experience across copper, gold and nickel in both exploration and mine environments. Managed the 2016 Viscaria drilling program delivering some of the best results in the history of the project.

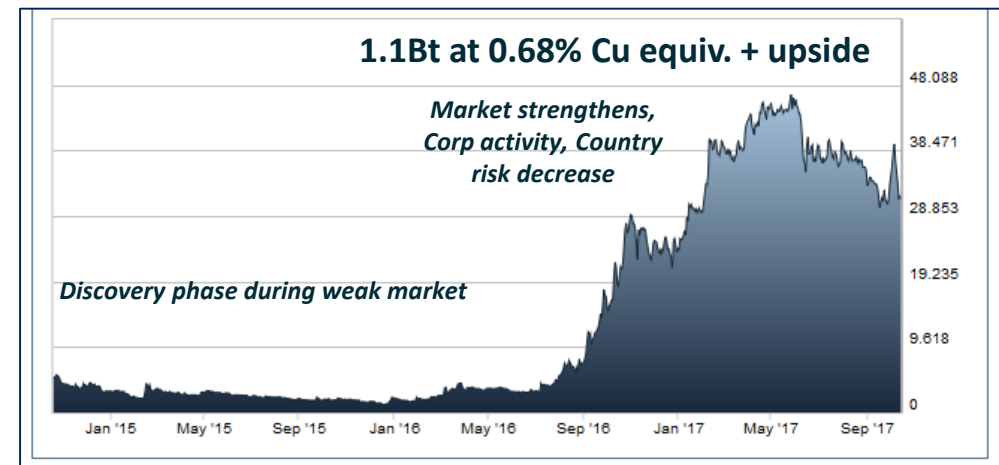
# VALUE GROWTH THROUGH DISCOVERY

Sunstone is the only ASX-listed junior providing direct junior company exposure to 'booming' Ecuador

- The Sunstone team have been involved in giant porphyry copper-gold discoveries with Intrepid Mines at Tujuh Bukit (Indonesia) and SolGold at Cascabel (Ecuador)
- We've learnt many lessons in that time - Shareholder value growth delivered through discovery, a supportive market, risk management; and value is sustained by delivering a clear pathway to potential development – secure title, a good operating regime, funding options, infrastructure



**Intrepid Mines**  
Tujuh Bukit -INDONESIA



**SolGold Plc**  
Cascabel - ECUADOR

# THERE'S A LOT GOING ON IN ECUADOR

- Majors and juniors have committed to spend hundreds of millions of dollars on exploration
- Most are looking for world class gold and copper deposits – genuine large growth opportunities
- High level of pre-drilling activity
- Drilling activity is expected to increase significantly



# SCOUT DRILLING INITIATIVE

---

**Announced last week by the Ecuadorian Ministry of Energy and Non-Renewable Natural Resources (MERNNR)**  
**“Ecuador is betting on being a mining country”**  
**Ministerial Decree released**

**Justification: ..... ‘to quote from MERNNR’**

## **Technical Advantages**

- Greater certainty of subsoil geological information
- Identification of mineral deposits in the initial exploration phase
- Increase in employment and investment in the first four years of mineral exploration
- Accelerated change to the advanced exploration phase
- Opportunity for the concession holder to obtain greater investment for the development of the mining project

## **Environmental Advantages**

- Number of permitted drill platforms depending on environmental sensitivity of area: **maximum of 40 platforms per concession**, and 20 platforms in highly environmentally sensitive areas
- Expedited administrative process (environmental "registration" as opposed to "license")



# BRAMADEROS – A WORLD-CLASS OPPORTUNITY

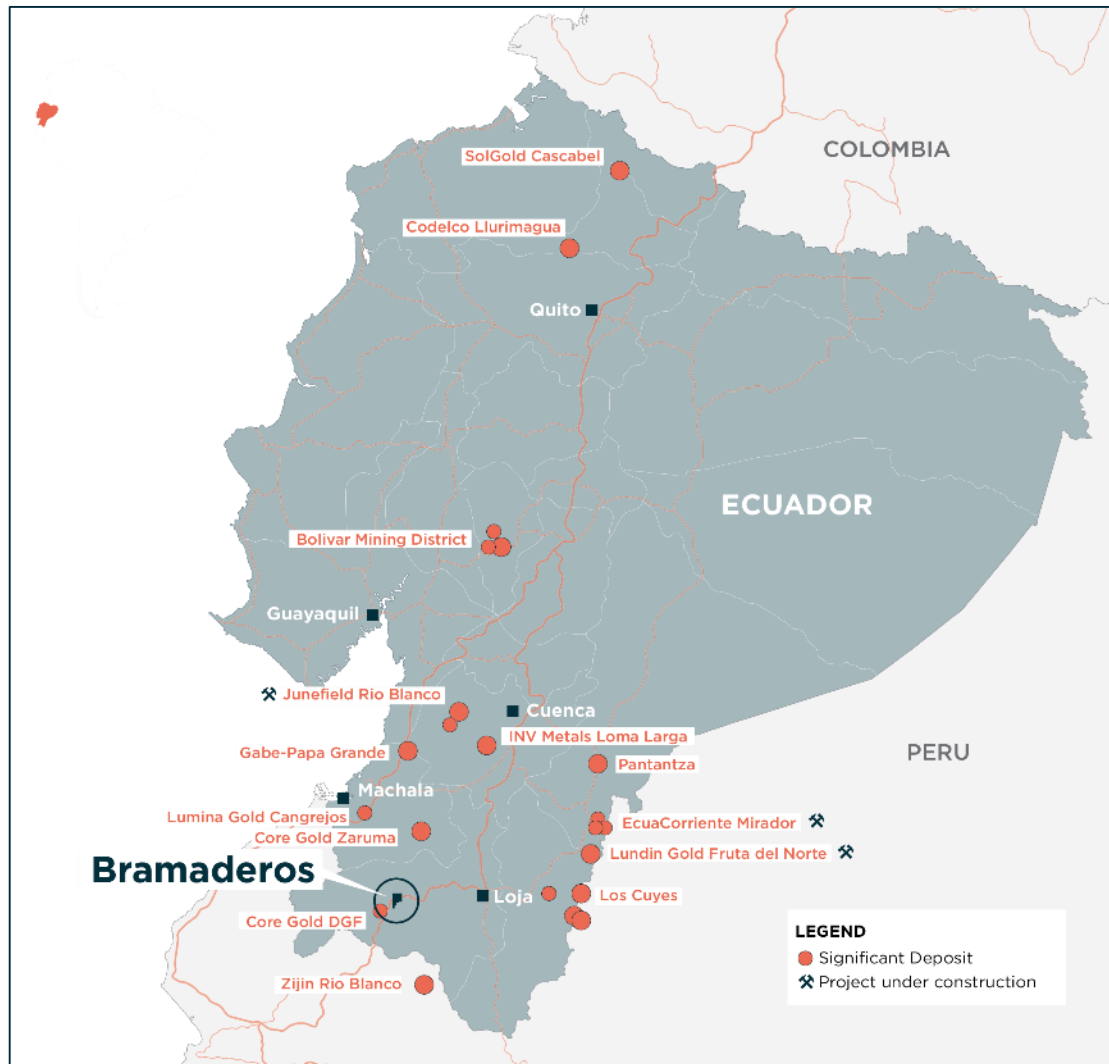
## A strong commitment to community and environment

- Regular local community meetings and information sessions on current and planned work programs
- Environmental and water studies completed as part of drill permit process. Water Permit received
- **EIA and Drill Permit process is progressing in parallel with potential opportunity for Scout Drilling**
- Ministry of Environment in Ecuador recognises the backlog issue and is increasing resources



# BRAMADEROS – A WORLD-CLASS OPPORTUNITY

## Matching the team with the opportunity



Ecuador is host to world-class copper-gold deposits, in one of the world's most highly prospective belts for porphyry and epithermal copper-gold deposits

Bramaderos is a JV; we have a binding farm-in agreement with TSXV listed **Cornerstone Capital Resources (TSXV:CGP)** where Sunstone can earn up to 80% (51% through spending US\$3.4 mill; 70% through funding feasibility study and payment of US\$1/gold equiv oz in M&I resource)

**Bramaderos contains multiple targets of both porphyry gold-copper and epithermal gold mineralised systems with strong potential to host a world-class discovery**

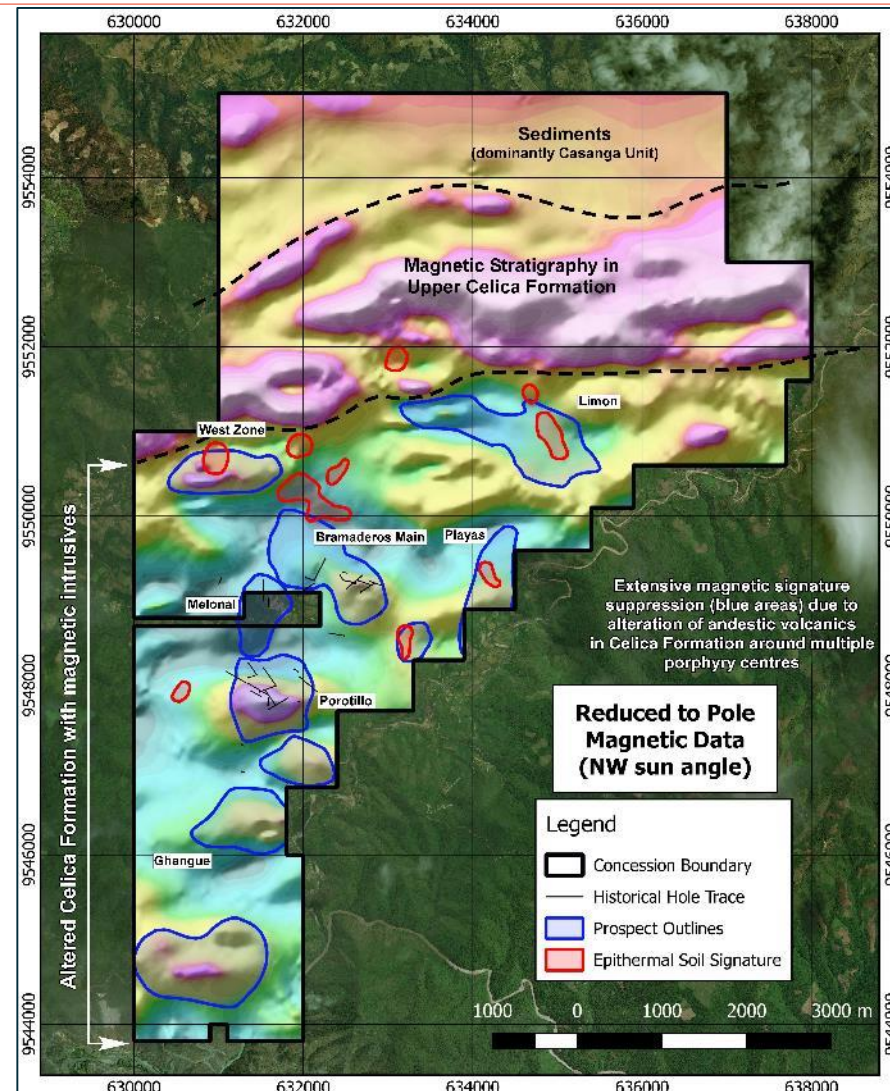
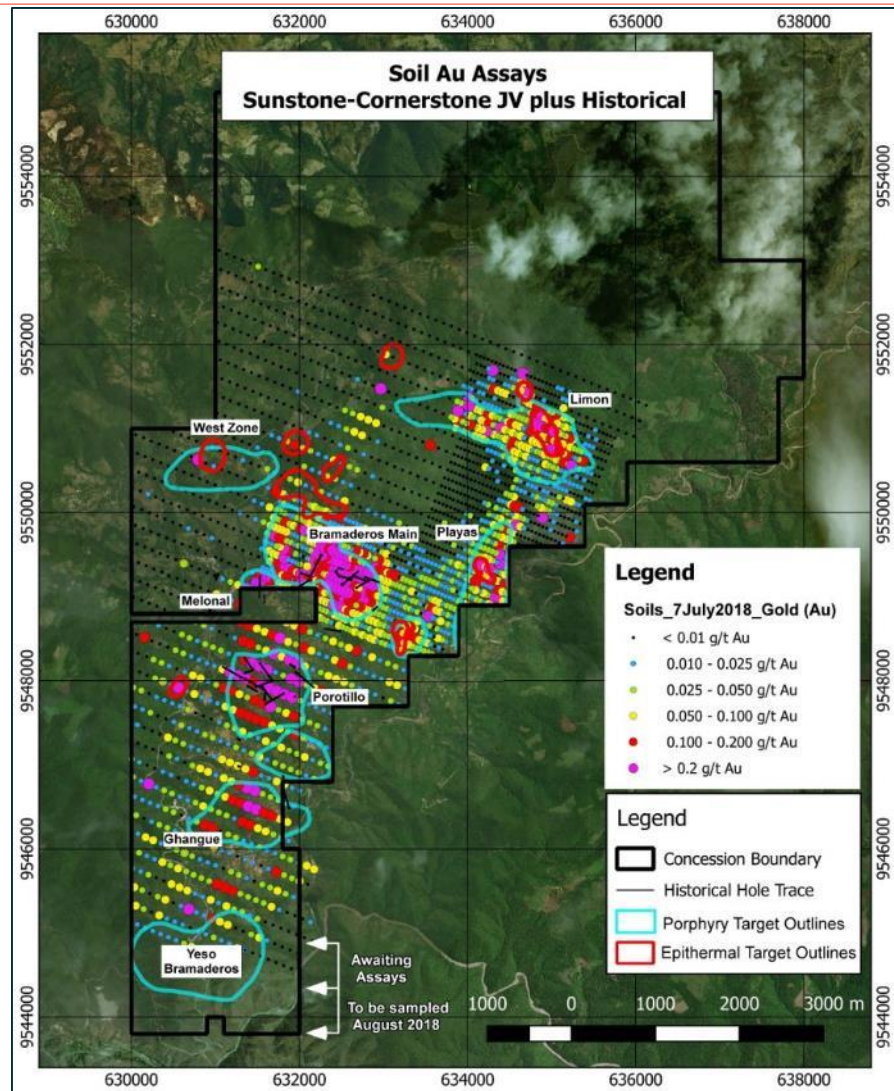
# BRAMADEROS – A WORLD-CLASS OPPORTUNITY

Multiple targets, very good location



# BRAMADEROS – A WORLD-CLASS OPPORTUNITY

Multiple porphyry gold-copper and epithermal gold-silver targets



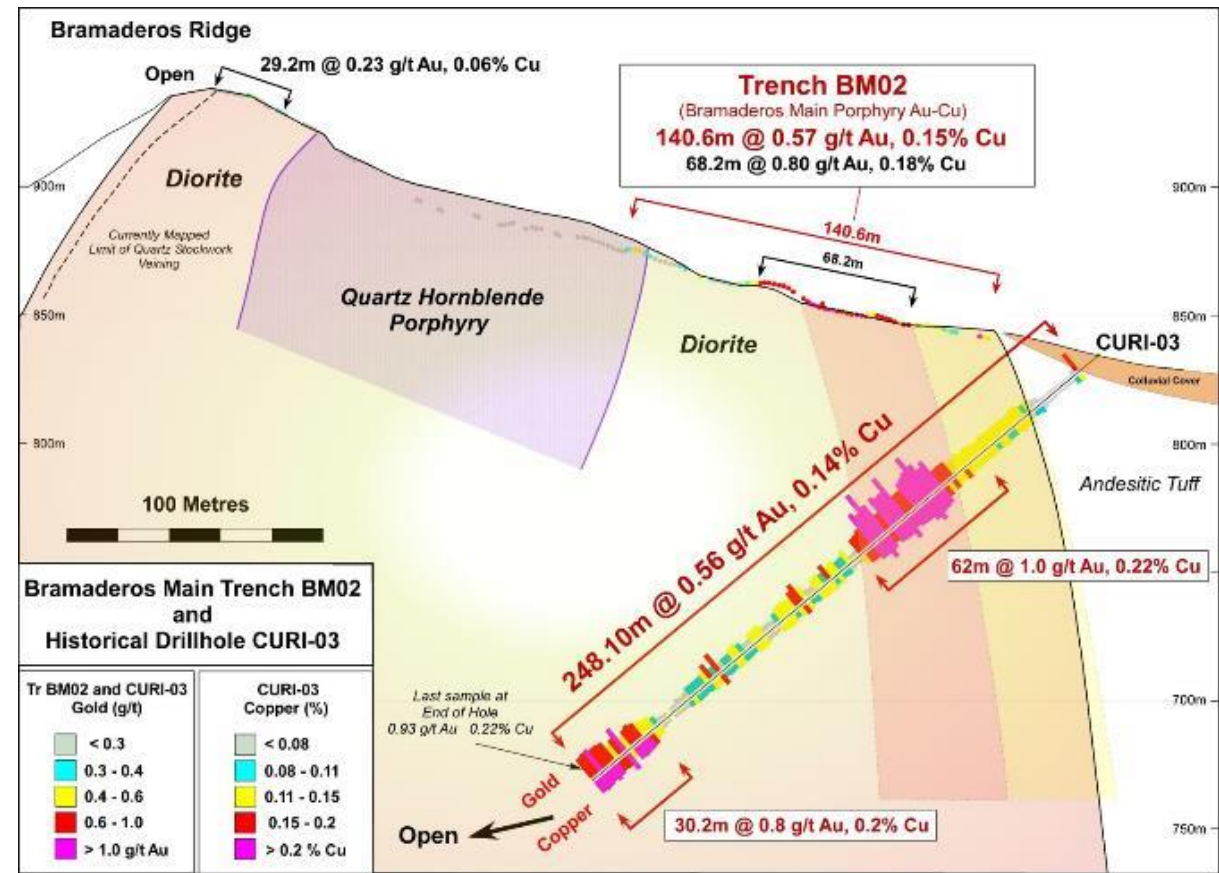
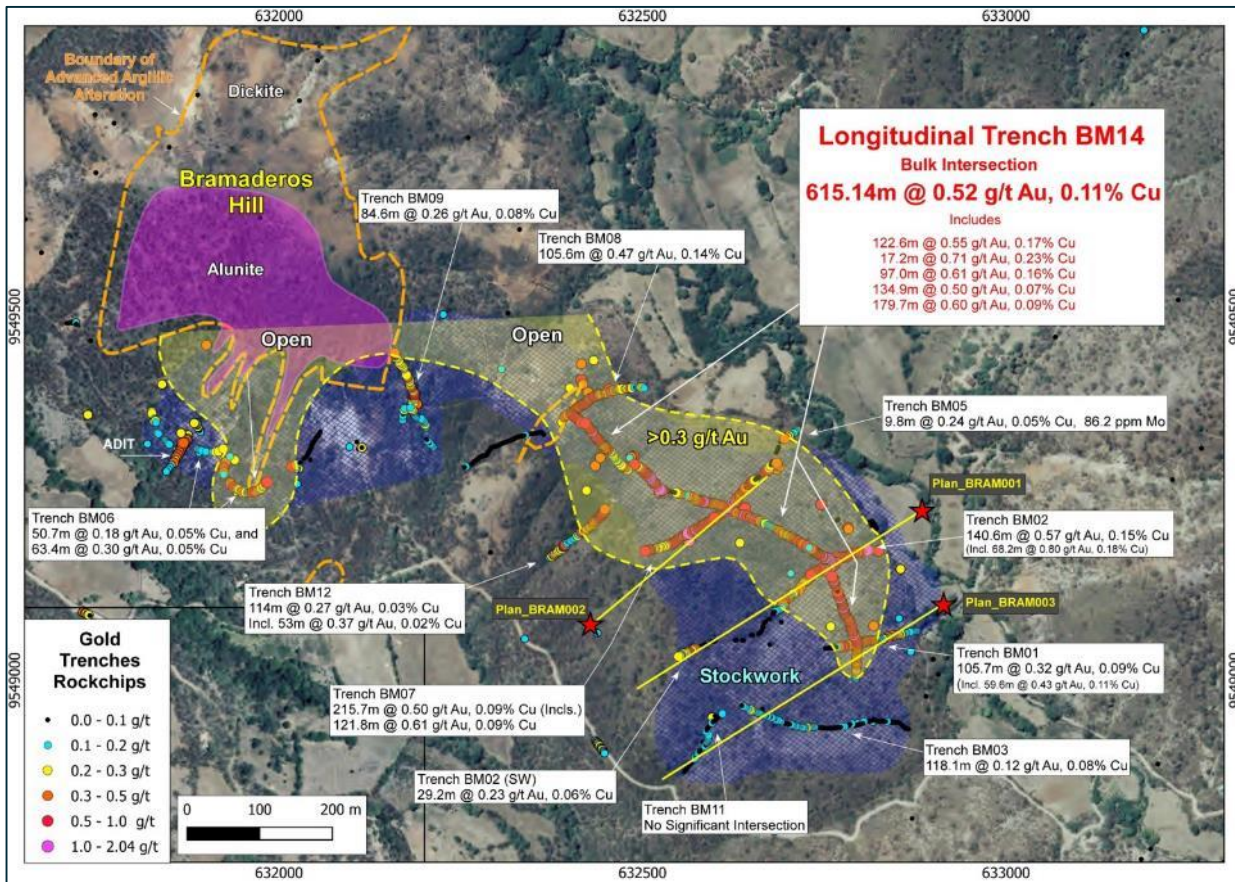
Multiple targets developed from multiple datasets

At least 3 targets to be drill tested in Phase 1 drilling

1. Bramaderos Main
2. West Zone
3. Limon

# BRAMADEROS – A WORLD-CLASS OPPORTUNITY

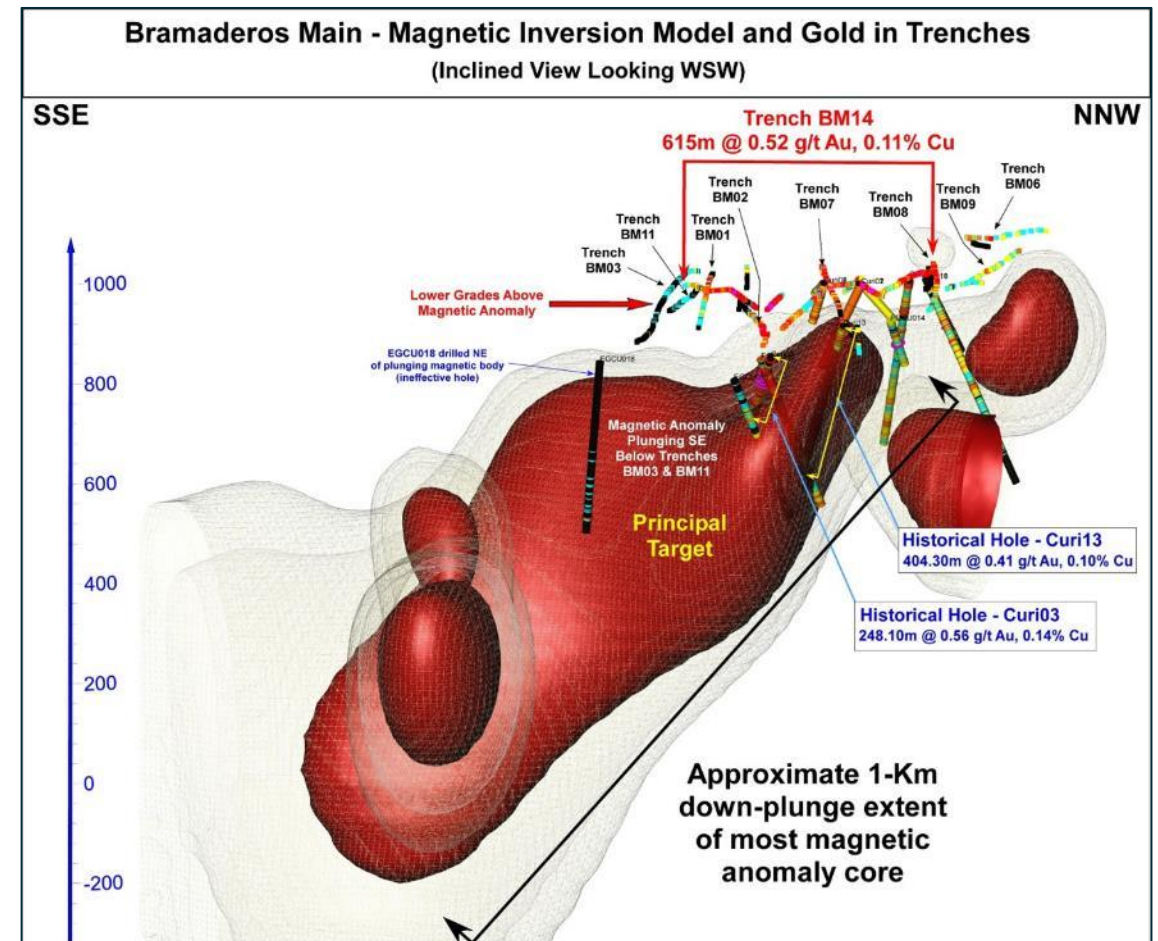
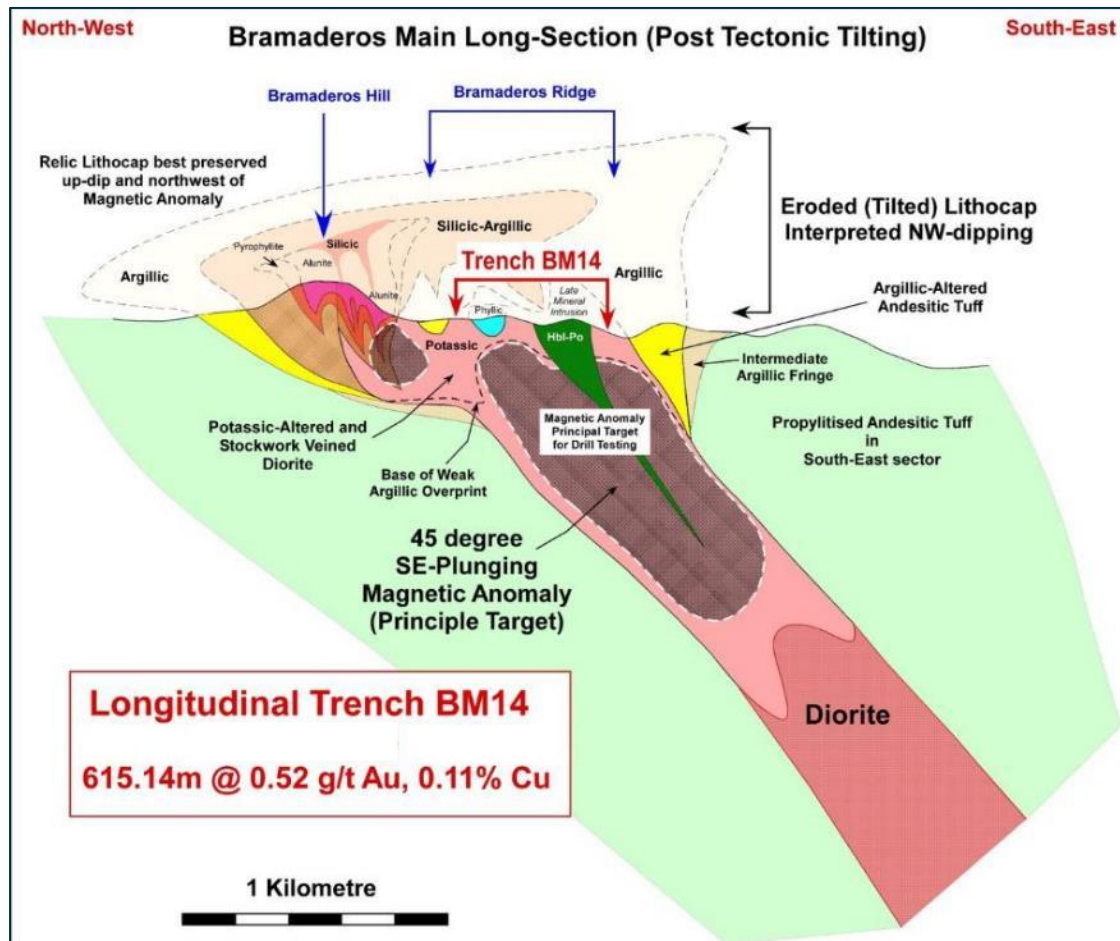
## Bramaderos Main delivering strong trench results



- 397m at 0.69g/t Au and 0.14% Cu cumulative interval; for all intervals >0.3g/t and >10m length
- Importantly, the trenching is also delivering greatly improved interpretation of the geometry of the mineralisation, in advance of drilling

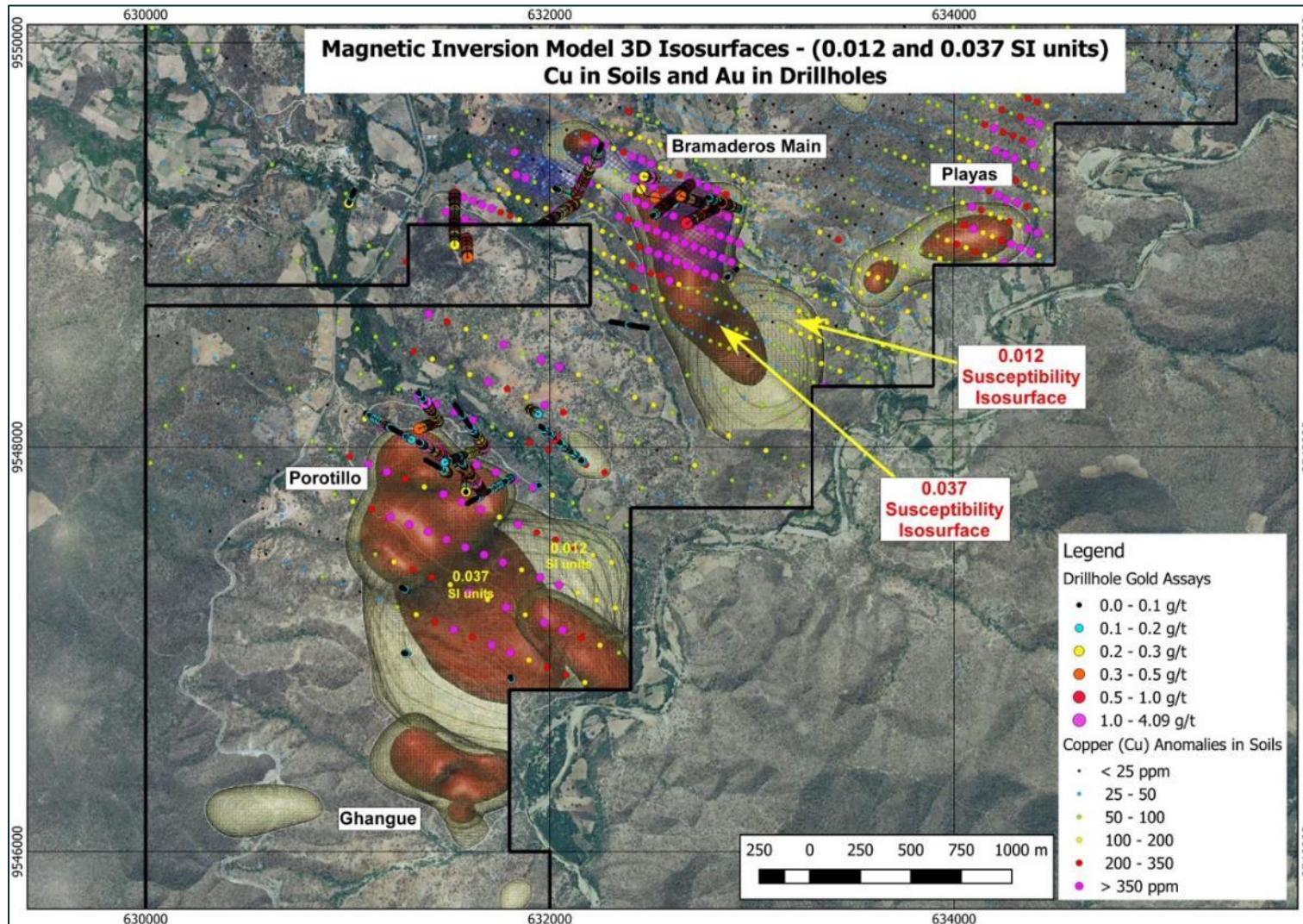
# BRAMADEROS – A WORLD-CLASS OPPORTUNITY

## Bramaderos Main – surface mineralisation and 3-D geophysics



# BRAMADEROS – A WORLD-CLASS OPPORTUNITY

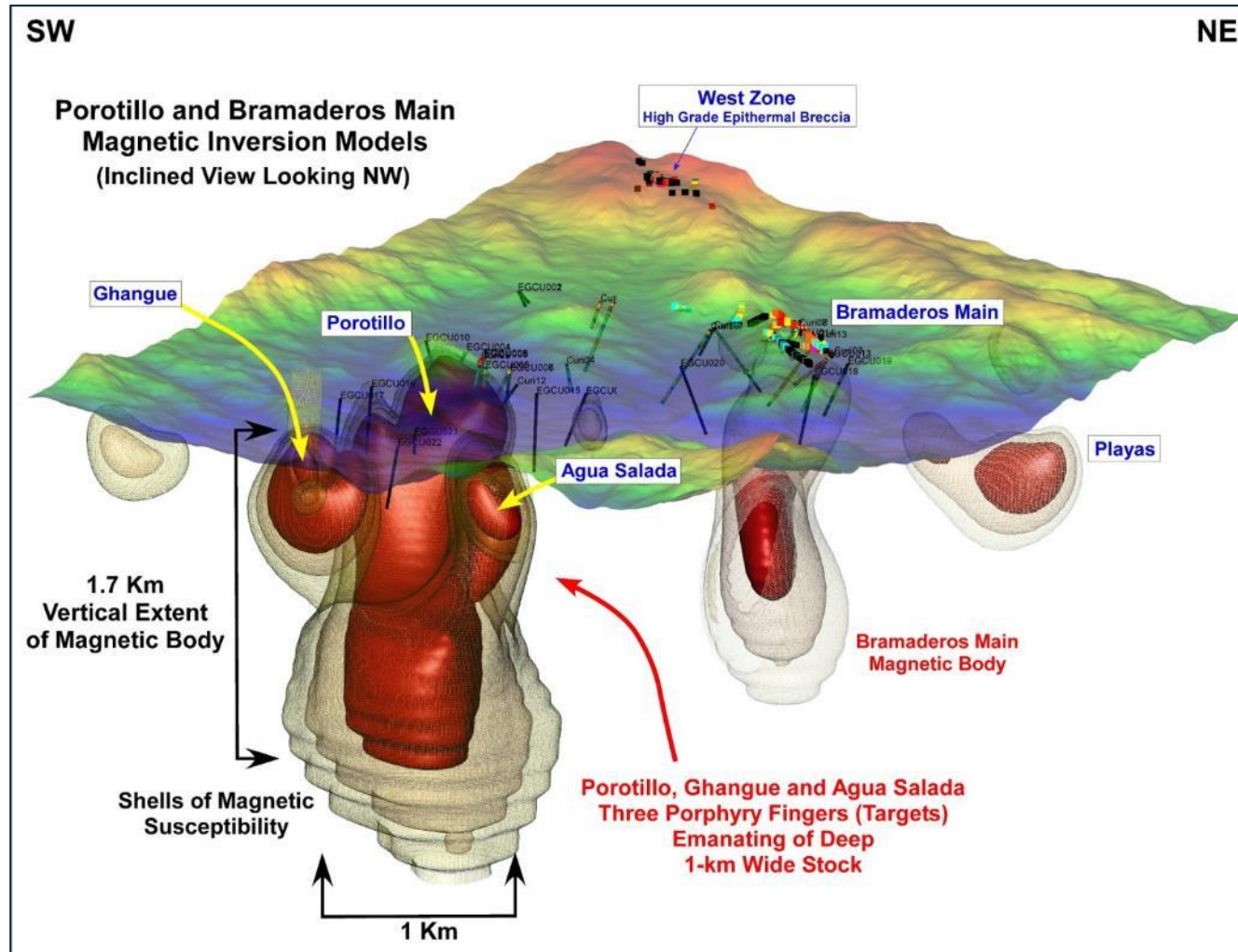
## Additional targets from 3-D magnetics modelling



- 3-D modelling of a subset of the detailed heli-magnetics
- Significant anomalies modelled at Bramaderos Main and Porotillo
- Vertical extent > 1km
- Modelled bodies project to surface in areas of anomalous gold in soils, and best historic drill holes and trenches

# BRAMADEROS – A WORLD-CLASS OPPORTUNITY

## Additional targets from 3-D magnetics modelling



- 3-D modelling of a subset of the detailed heli-magnetics
- Significant anomalies modelled at Bramaderos Main and Porotillo
- Vertical extent > 1km
- Modelled bodies project to surface in areas of anomalous gold in soils, and best historic drill holes and trenches



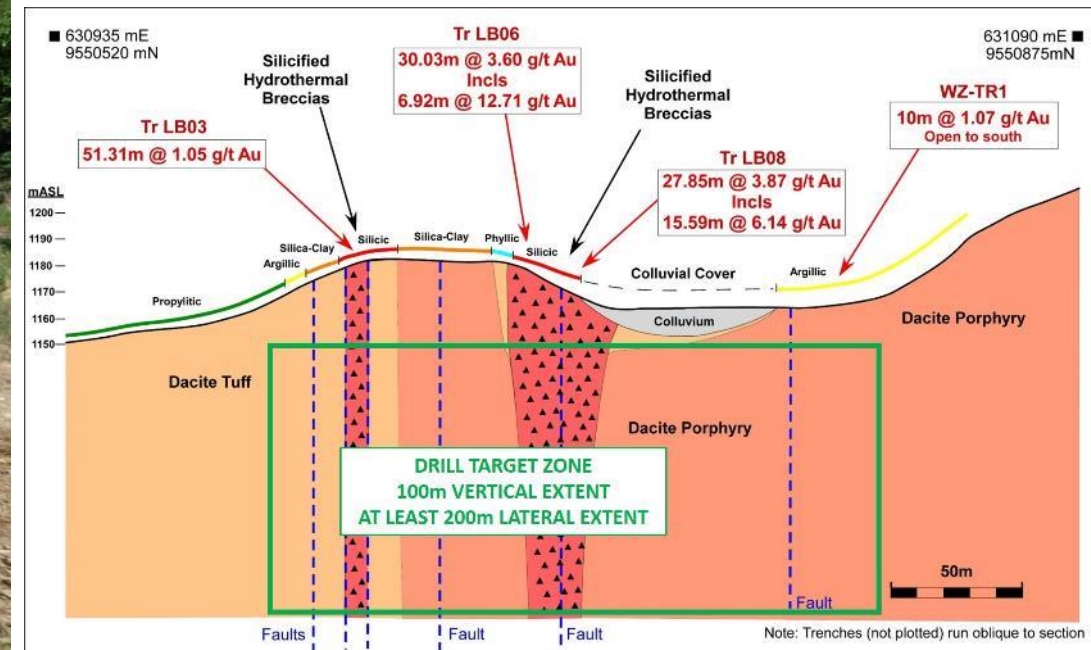
# BRAMADEROS – A WORLD-CLASS OPPORTUNITY

## West Zone delivering strong trench results

**West Zone Trench 8**  
**8.9m @ 6.06 g/t Au (Open)**



- West Zone trenches delivering higher grade epithermal style results
- Recent geophysical results, complemented by alteration mapping, suggest there may also be a porphyry target at depth
- **15.6m at 6.14 g/t Au and 6.92m at 12.71 g/t Au**

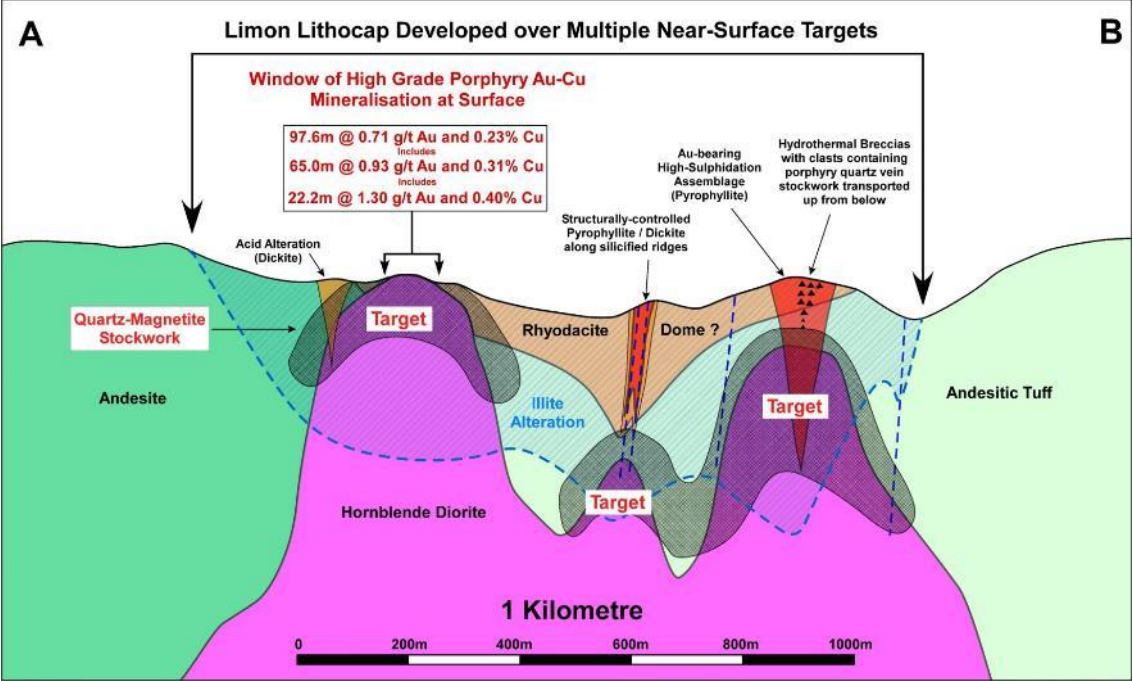
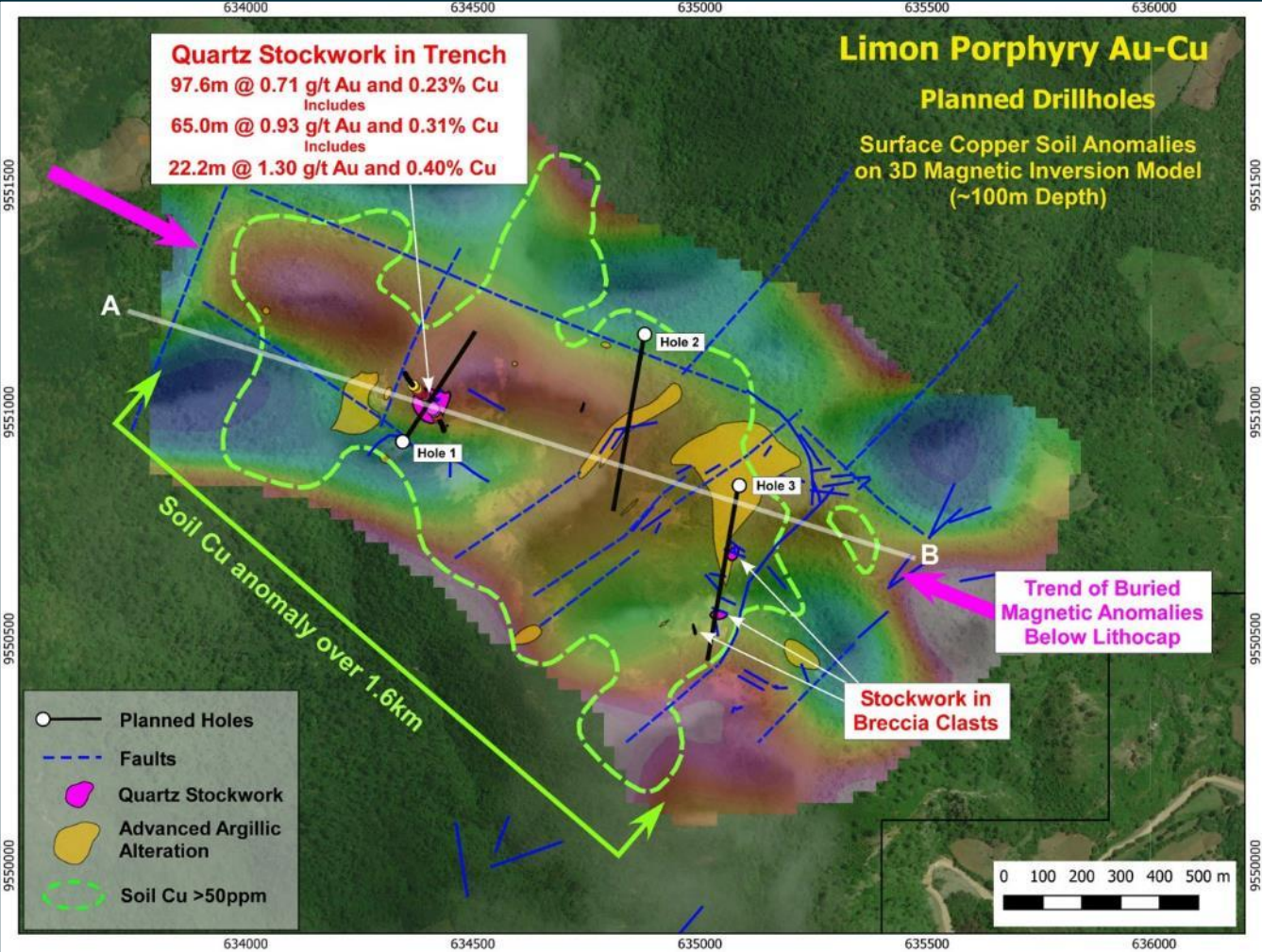


# BRAMADEROS – A WORLD-CLASS OPPORTUNITY

## Limon - absolutely outstanding initial trench results

- Breakthrough, high grade results
- A 'window' into a significant porphyry system

**97.6m at 0.71g/t gold and 0.23% copper at surface, including 65.0m at 0.93g/t gold and 0.31% copper**



# BRAMADEROS – A WORLD-CLASS OPPORTUNITY

Limon - absolutely outstanding initial trench results

---



# VISCARIA COPPER PROJECT

## Advanced copper project in northern Sweden

- High quality copper project
- Over 600kt copper resource
- PFS stage copper development opportunity in a mining district
- Development permitting in progress
- Exceptional exploration upside
- Region is home to Europe's largest open pit copper mine (Aitik) and the worlds largest underground magnetite mine (LKAB)



PROJECT SITE



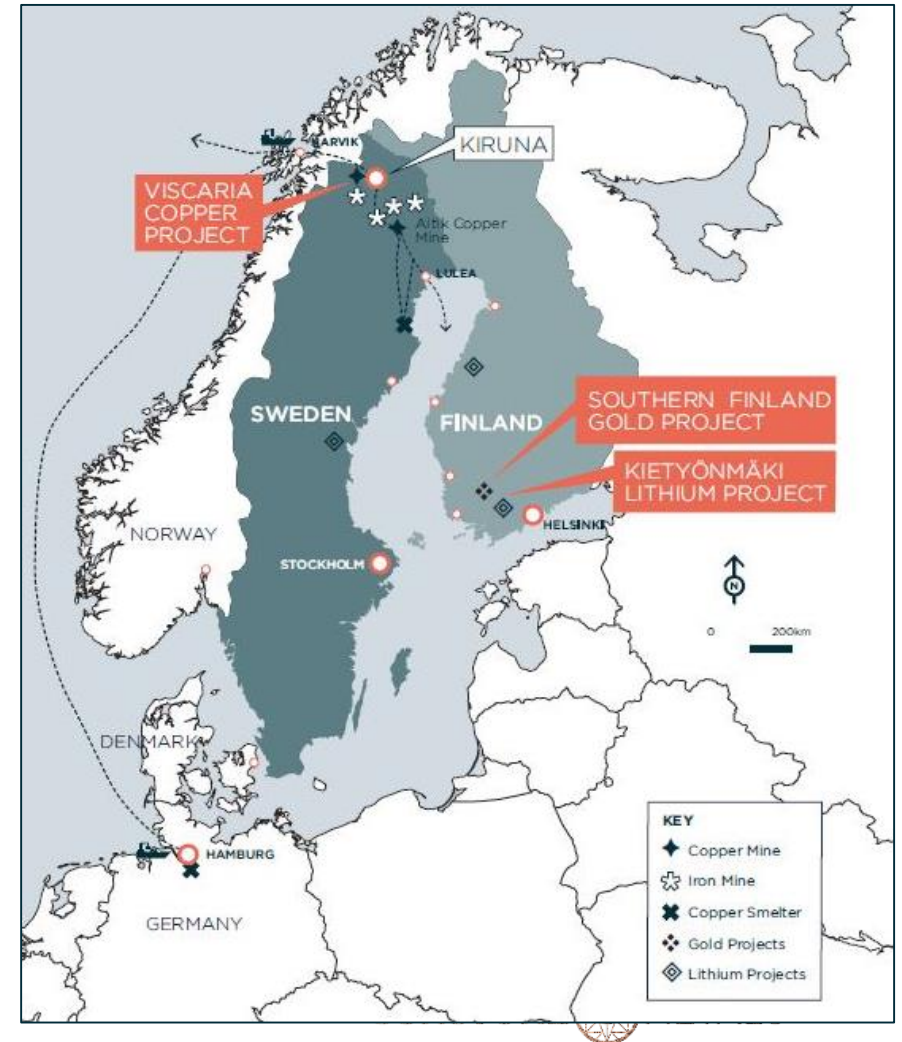
KIRUNA TOWN



PUBLIC ACCESS ELECTRICAL RAIL

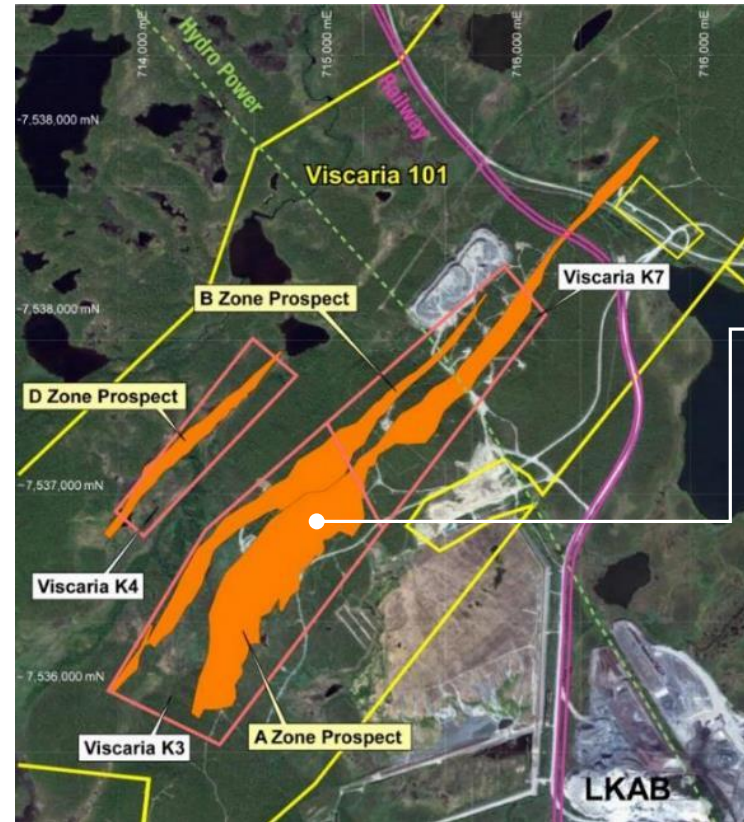


LOW COST HYDRO POWER

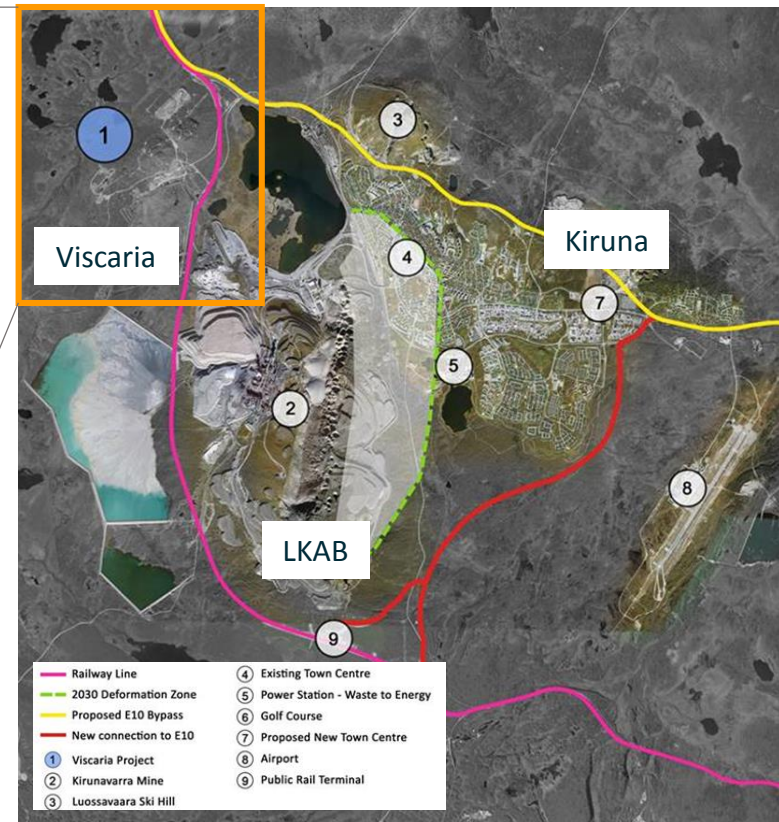


# VISCARIA COPPER PROJECT

## Outstanding Location



Copper orebodies shown in orange



A Zone previously mined  
D Zone not mined and a great orebody

**Mineral Resource estimate 52Mt at 1.2% Cu (JORC 2012)\***

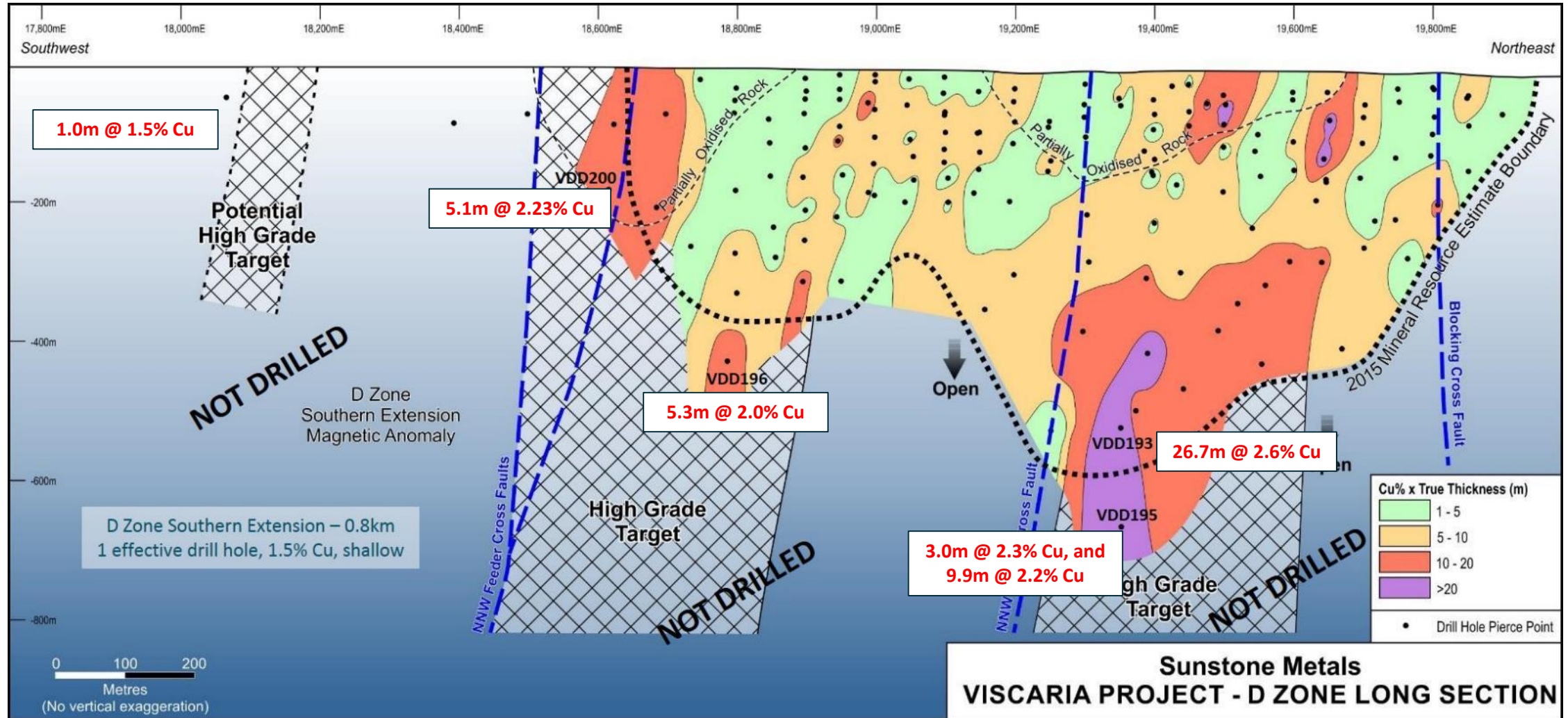
18Mt subset of that used in 2016 Scoping Study\*

Can operate all year; weather is not a hindrance

\*See ASX announcements 14<sup>th</sup> Dec 2015 and 5<sup>th</sup> April 2016; also Refer Annual Report released 16 August 2016, Mineral Resource Estimate table and the Competent Persons Statement at the end of this presentation

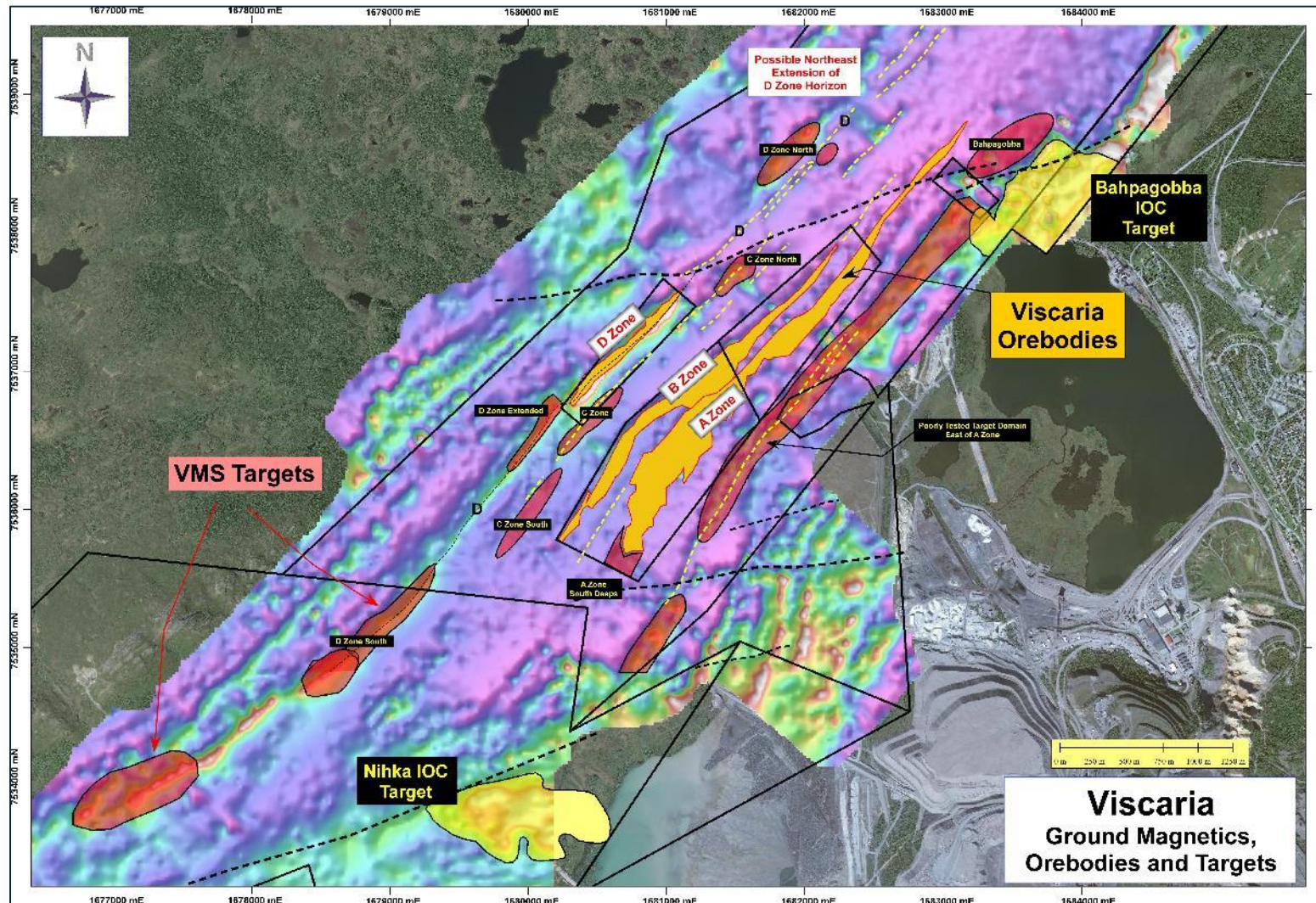
# VISCARIA PROJECT – D ZONE

Considerable upside potential laterally to the south and down plunge



# VISCARIA PROJECT – NEAR-MINE TARGETS

Several kilometers of target horizon for D and A Zone analogues



- Exploration upside is very compelling
- Multiple 'VMS' targets similar to A Zone and D Zone
- In addition, there are a series of 'Iron Oxide Copper' targets. Sunstone has drilled 3 to date, Nihka, Bahpagobba and West Nukutus.

# PLANNED WORK AND NEWS FLOW





# COMPETENT PERSONS STATEMENT

The information in this report that relates to exploration results and exploration targets and results is based upon information reviewed by Dr. Bruce Rohrlach who is a member of the Australasian Institute of Mining and Metallurgy. Dr. Rohrlach is a full-time employee of Sunstone Metals Ltd and has sufficient experience which is relevant to the style of mineralisation and type of deposit under consideration and to the activity which he is undertaking to qualify as a Competent Person as defined in the 2012 Edition of the “Australasian Code for Reporting of Exploration Results, Mineral Resources and Ore Reserves”. Dr. Rohrlach consents to the inclusion in the report of the matters based on his information in the form and context in which it appears.

Refer to Annual Report released 7 September 2017 for the Competent Persons Statement in relation to the estimates of mineral resources. The Company confirms that it is not aware of any new information or data that materially affects the information and all material assumptions and technical parameters underpinning the estimates continue to apply and have not materially changed.

The information in this report that relates to the updated D Zone Mineral Resource estimate is based on the information compiled by Chris Grove who is a Member of the Australasian Institute of Mining and Metallurgy and is a full time employee of Measured Group Pty Ltd. Measured Group is an independent mining consultancy who have been engaged by Sunstone Metals Limited to perform geological consulting on a fee for service basis. Mr Grove has sufficient experience that is relevant to the style of mineralisation being considered and to the activity being undertaken to qualify as a competent person as defined in the 2012 Edition of the Australasian Code for Reporting of Exploration Results, Mineral Resources and Ore Reserves. Mr Grove consents to the inclusion in this report of the matters based on his information in the form and context in which it appears.

# VISCARIA COPPER PROJECT

## Mineral Resource Estimate

Resource Area	Classification	Tonnes (Mt)	Cu Grade (%)	Contained Cu (kt)
A Zone	Measured	14.44	1.7	240.0
	Indicated	4.69	1.2	57.2
	Inferred	2.48	1	25.5
	<b>Subtotal</b>	<b>21.61</b>	<b>1.5</b>	<b>322.7</b>
B Zone	Measured	0.12	1.3	1.6
	Indicated	4.12	0.7	29.7
	Inferred	15.41	0.8	118.7
	<b>Subtotal</b>	<b>19.65</b>	<b>0.8</b>	<b>149.0</b>
D Zone	Indicated	3.11	0.81	25.2
	Inferred	0.01	0.32	0.02
	<b>Subtotal (open pit)</b>	<b>3.11</b>	<b>0.81</b>	<b>25.2</b>
	Indicated	7.26	1.37	99.8
	Inferred	0.78	1.57	12.2
	<b>Subtotal (underground)</b>	<b>8.03</b>	<b>1.39</b>	<b>111.9</b>
<b>Overall Cu</b>	<b>Total</b>	<b>52.4</b>	<b>1.2</b>	<b>608.9</b>